

MODULE 22: EXTERNAL TRANSFERS

On Completion of this module you will be able to transfer your data to external programs such as Notepad ®, MS Word ® and MS Excel ®.

Subject Outcome 1: Introduction

Subject Outcome 2: In-Direct transfer to Notepad ®

Subject Outcome 3: Importing RTF file (MS Word ®)

Subject Outcome 4: Direct transfer to MS Word ®

Subject Outcome 5: Coding RTF File and open with MS Word ®

Subject Outcome 6: Reading from MS Excel ®

Subject Outcome 7: Transfer data into MS Excel ®

Subject Outcome 7.1: CSV

Subject Outcome 7.2: SLK

Subject Outcome 7.3: Comal Direct



22.1 INTRODUCTION

This function has to do with the availability to compatibility. You have written an unique program to be used by a company, however the outputs [data] cannot be read by the next company to whom you forward it as they don't have that unique program, so you have to convert it to a format that every Windows O/S computer has, namely, MS Word ® [documents] and MS Excel ® [spreadsheets]. Notepad ® is also an option; however it will only be used for simple text reports.

22.2 NOTEPAD ® Transfers

Notepad is mainly capable of reading a text format [.TXT] Therefore to transfer is easy as you will save the output document as a text [TXT] file and open it using Notepad ®.

| SNO | CODING | EXPLANATION |
|-----|--|---|
| 1 | <pre> \$TYPECHECK ON \$INCLUDE <RapidQ2.inc> dim blank as qstringlist dim i as single if direxists("c:\ms3")=0 then mkdir "c:\ms3" if direxists("c:\ms3\~common")=0 then mkdir "c:\ms3\~common" declare sub openwithnotepad CREATE Form AS QFORM Caption = "TEXT":Width = 640:Height = 480:Center create edit as qrichedit left=10:top=10:width=600:height=400 end create create main as qmainmenu create menu1 as qmenuitem caption="Save && Open with Notepad" onclick=openwithnotepad end create end create END CREATE SetWindowLong(Form.Handle, -8, 0) SetWindowLong(Application.Handle, -8, Form.Handle) Form.ShowModal sub openwithnotepad blank.clear for i = 0 to edit.linecount-1 blank.additem edit.line(i) next i blank.savetofile "c:\ms3\~common\infotest.txt" run "notepad.exe c:\ms3\~common\infotest.txt" end sub </pre> | <p>The string variable that will save the TXT file.</p> <p>Ensure the directories for the saved document exist.</p> <p>The sub program to transfer to NOTEPAD ®.</p> <p>An editor to type some text.</p> <p>The button (menu button) to transfer the typed text.</p> <p>Transfer the text from the editor to the string list variable.</p> <p>Save the document in TXT format.</p> <p>Call the saved document with Notepad ®.</p> |

22.3 Importing RTF file (MS Word ®)

A RTF file is created using MS Word ® or WordPad. It is more complicated than Notepad as Notepad has no format settings (font size and colour). You are able to import a RTF file with QRICHEDIT and keep the format (excluding graphics, you cannot display graphics on the QRICHEDIT). To create a RTF file, type your document, but then SAVE AS, and select file type as Rich Text Format (RTF).

| SNO | CODING | EXPLANATION |
|-----|---|--|
| 1 | <pre> \$TYPECHECK ON \$INCLUDE <RapidQ2.inc> dim blank as qstringlist dim i as single if direxists("c:\ms3")=0 then mkdir "c:\ms3" if direxists("c:\ms3\~common")=0 then mkdir "c:\ms3\~common" declare sub openwithword CREATE Form AS QFORM Caption = "TEXT":Width = 640:Height = 480:Center create edit as qrichedit left=10:top=10:width=600:height=400 end create create main as qmainmenu create menu1 as qmenuitem caption=" Open MS Word ® RTF" onclick=openwithword end create end create END CREATE SetWindowLong(Form.Handle, -8, 0) SetWindowLong(Application.Handle, -8, Form.Handle) Form.ShowModal sub openwithword edit.loadfromfile "c:\ms3\mybis\rtftest.rtf" end sub </pre> | <p>Load RTF directly into QRICHEDITOR.</p> |

22.4 Transferring to MS Word ®

To transfer information towards MS Word ® is a bit more complicated as it is not just simple text; it also has format (font, size, and colour) and graphics.

You need to consider the following criteria when transferring data to MS Word ®:

- Style (font name, size, bold, etc.)
- Spaces and position on page
- Graphics



| SNO | CODING | EXPLANATION |
|-----|--|---|
| 1 | <pre> \$TYPECHECK ON \$INCLUDE <RapidQ2.inc> DIM Object AS GOLEOBJECT dim blank as qstringlist dim i as single if direxists("c:\ms3")=0 then mkdir "c:\ms3" if direxists("c:\ms3\~common")=0 then mkdir "c:\ms3\~common" declare sub transferasword CREATE Form AS QFORM Caption = "TEXT":Width = 640:Height = 480:Center create edit as qrichedit left=10:top=10:width=600:height=400 end create create main as qmainmenu create menu1 as qmenuitem caption="Transfer into MS Word @." onclick=transferasword end create end create END CREATE SetWindowLong(Form.Handle, -8, 0) SetWindowLong(Application.Handle, -8, Form.Handle) Form.ShowModal sub transferasword Object.CreateObject("word.basic") Object.AppShow Object.AppMaximize("", 1) Object.FileNew object.font.size(24):object.font("arial narrow") object.bold Object.Insert("THIS IS A HEADING") object.insert(chr\$(13)) object.font.size(12):object.font("arial narrow") object.bold(0) Object.Insert("1."+chr\$(9)+"Paragraph one.") object.insert(chr\$(13)) object.insertpicture ("c:\ms3\mybis\gx\beauty.bmp") Object.Free end sub </pre> | <p>Adding a heading with font settings and a paragraph with other font settings. This OBJECT is to create the element that will call the MS Word ® program and control the transfer towards it.</p> <p>Sub program where the transfer will occur.</p> <p>Button to transfer information.</p> <p>Open MS Word ® - irrespective of version. This will display it. At maximum screen resolution Start a new file. Set the font settings. Add bold to the font. Display the heading. Next line (CHR\$(13)). Alter the font settings. Switch off bold setting. Display paragraph 1 - CHR\$(9) represents a TAB space. Add a BMP image. Close and complete document with MS Word ®.</p> |

22.5 Coding RTF file and opening with MS Word ®

Another way with more functions (font colour, tables, etc.) is to code a RTF file and then open it (as a saved RTF file) with MS Word ®. To learn more see;

<https://www.safaribooksonline.com/library/view/rtf-pocket-guide/9781449302047/ch01.html>

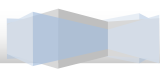
You need to take the following in consideration:

- Page layout (landscape or portrait)
- Text
- Tables
- Images

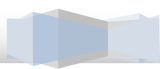
| SNO | CODING | EXPLANATION |
|-----|--|---|
| 1 | <pre> \$TYPECHECK ON \$INCLUDE <RapidQ2.inc> DIM Object AS GOLEOBJECT dim blank as qstringlist dim i as single dim woord as string if direxists("c:\ms3")=0 then mkdir "c:\ms3" if direxists("c:\ms3\~common")=0 then mkdir "c:\ms3\~common" declare sub transferasword CREATE Form AS QFORM Caption = "RTF CREATION":Width = 640:Height = 480:Center create edit as qlistbox left=10:top=10:width=600:height=400 end create create main as qmainmenu create menu1 as qmenuitem caption="Transfer into MS Word @." onclick=transferasword end create end create END CREATE SetWindowLong(Form.Handle, -8, 0) SetWindowLong(Application.Handle, -8, Form.Handle) Form.ShowModal sub transferasword blank.clear blank.additems "{\rtf1\ansi\deff0 {\fonttbl {\f0 Monotype Corsiva;}}}" blank.additems "\paperw11909\paperh16834" blank.additems "\margl1440 \margr1900 \margt1800 \margb1800" blank.additems "\landscape" blank.additems "\qc\fo\fs60\b\i HEADING" blank.additems "\par\par\b0\i\fs24" blank.additems "\ql This should be paragraph 1. \par" blank.additems "\qr\ul This is underline. \par" blank.additems "\q\ul0 Did you get the H{\sub 2}O from them? \par\par" blank.additems "\q\ul0 Did you get the 5{\super th}O element?" blank.additems "\page" blank.additems "\qc\fo\fs60\b\i HEADING 2" blank.additems "" edit.text=blank.text blank.savetofile "c:\ms3\~common\rtftest.rtf" Object.CreateObject("word.basic") Object.AppShow Object.appmaximize("", 1) object.fileopen("c:\ms3\~common\rtftest.rtf") Object.Free end sub </pre> | <p>Layout & page settings.</p> <p>We will write a file in RTF format and then call MS Word to open and display it.</p> <p>Call the transfer.</p> <p>Clear the variable for RTF coding. Create font type 0 – Monotype Set paper size (portrait A4) Set margins for page Set page. Display heading (QC- center, FO – use font type 0, font size 30, Bold on, Italic on. New line, New Line, switch off bold, switch off italic, Font size 12. Left align (QL), New line. Right align (QL), Underline Left align (underline off), alter 2 as sub character, new line, new line.</p> <p>Super the 5th character. New page New heading QC (center), font size 30. Ends file format creation. Copy to list box to view. Save as RTF file. Establish MS Word.</p> <p>Open file. Free memory.</p> <p>\QJ will smooth a paragraph with many lines so that both sides are the same size (spaced).</p> |



| SNO | CODING | EXPLANATION |
|-----|--|--|
| 2 | <pre> \$TYPECHECK ON \$INCLUDE <RapidQ2.inc> DIM Object AS QOLEOBJECT dim blank as qstringlist dim i as single dim woord as string if direxists("c:\ms3")=0 then mkdir "c:\ms3" if direxists("c:\ms3\~common")=0 then mkdir "c:\ms3\~common" declare sub transferasword CREATE Form AS QFORM Caption = "RTF CREATION":Width = 640:Height = 480:Center create edit as qlistbox left=10:top=10:width=600:height=400 end create create main as qmainmenu create menu1 as qmenuitem caption="Transfer into MS Word @." onclick=transferasword end create end create END CREATE SetWindowLong(Form.Handle, -8, 0) SetWindowLong(Application.Handle, -8, Form.Handle) Form.ShowModal sub transferasword blank.clear blank.additems "{\rtf1\ansi\deff0 {\fonttbl {\f0 Monotype Corsiva;}}}" blank.additems "\paperw11909\paperh16834" blank.additems "\margl1440 \margr1900 \margt1800 \margb1800" blank.additems "\landscape" blank.additems "\qc\f0\fs80\b\i HEADING" blank.additems "\par\par\b0\i0\fs24" blank.additems "\ql This should be paragraph 1. \par" blank.additems "\q\ This is line 1. \par" blank.additems "\ql This is line 2. \par\par" blank.additems "\q\ This is \fs60 line \fs24 3. \par\par" blank.additems "\q\ {\pard\li1200 \ri1200 \qj This is line 4 and all of this is within " blank.additems "one paragraph. The text will continue to add to " blank.additems "one another until the end of the paragraph has been " blank.additems "indicated. \par}\par" blank.additems "\ql This is line 4. \par\par" blank.additems "\q\ {\pard\keep \li1200 \ri0 \qj This is line 5 and all of this is within " blank.additems "one paragraph. The text will continue to add to " blank.additems "one another until the end of the paragraph has been " blank.additems "indicated. \par}\par" blank.additems "}" edit.text=blank.text blank.savetofile "c:\ms3\~common\rtftest.rtf" Object.CreateObject("word.basic") Object.AppShow Object.appmaximize("", 1) object.fileopen("c:\ms3\~common\rtftest.rtf") Object.Free end sub </pre> | <p>More Settings:</p> <p>Font Size 40. Reset fonts, double par spaces.</p> <p>Double par. Alter font size 30 for word LINE. Alter back 12. Start full par {\pard and display everything as a block until \par}. LI1200 will create a tab where the paragraph will begin. The RI1200 will create a stop tab block up to where the paragraph may display. Use RI0 to reset again till the end of the page. Remember space at the end of a break in a paragraph.</p> |



| SNO | CODING | EXPLANATION |
|-----|--|---|
| 3 | <pre> \$TYPECHECK ON \$INCLUDE <RapidQ2.inc> DIM Object AS QOLEOBJECT dim blank as qstringlist dim i as single dim woord as string if direxists("c:\ms3")=0 then mkdir "c:\ms3" if direxists("c:\ms3\~common")=0 then mkdir "c:\ms3\~common" declare sub transferasword CREATE Form AS QFORM Caption = "RTF CREATION":Width = 640:Height = 480:Center create edit as qlistbox left=10:top=10:width=600:height=400 end create create main as qmainmenu create menu1 as qmenuitem caption="Transfer into MS Word @." onclick=transferasword end create end create END CREATE SetWindowLong(Form.Handle, -8, 0) SetWindowLong(Application.Handle, -8, Form.Handle) Form.ShowModal sub transferasword blank.clear blank.additems "{\rtf1\ansi\deff0 {\fonttbl {\f0 Monotype Corsiva;} blank.additems {\f1 Arial;}{f2 Arial Bold;}}" blank.additems "\paperw11909\paperh16834" blank.additems "\margl1440 \margr1900 \margt1800 \margb1800" blank.additems "\landscape" blank.additems "\qc\f0\fs80\b\i HEADING" blank.additems "\par\par\b0\i0\fs24" blank.additems "\ql This should be paragraph 1. \par" blank.additems "\ql This is line 1. \par" blank.additems "\ql\f1 This is line 2. \par\par" blank.additems "\ql\f0 This is \fs60 line \fs24 3. \par\par" blank.additems "\ql {\pard \li1200 \ri1200 \qj This is line 4 and all of this is within " blank.additems "one paragraph. The text will continue to add to " blank.additems "one another until the end of the paragraph has been " blank.additems "indicated. \par}\par" blank.additems "\ql\f2 This is line 4. \par\par" blank.additems "\ql\f0 {\pard \keep \li1200 \ri0 \qj This is line 5 and all of this is within " blank.additems "one paragraph. The text will continue to add to " blank.additems "one another until the end of the paragraph has been " blank.additems "indicated. \par}\par" blank.additems ""} edit.text=blank.text blank.savetofile "c:\ms3\~common\rtftest.rtf" Object.CreateObject("word.basic") Object.AppShow Object.appmaximize("", 1) object.fileopen("c:\ms3\~common\rtftest.rtf") Object.Free end sub </pre> | <p>Adding more font options and selecting the style as required.</p> <p>FO=Mono F1=Arial F2=Arial Bold</p> <p>Activate FO</p> <p>Activate F1 Activate FO</p> <p>Activate F2 Activate FO</p> <p>The last font identified will be used until it is changed.</p> |



| SNO | CODING | EXPLANATION |
|-----|---|---|
| 4 | <pre> \$TYPECHECK ON \$INCLUDE <RapidQ2.inc> DIM Object AS QOLEOBJECT dim blank as qstringlist dim i as single dim woord as string if direxists("c:\ms3")=0 then mkdir "c:\ms3" if direxists("c:\ms3\~common")=0 then mkdir "c:\ms3\~common" declare sub transferasword CREATE Form AS QFORM Caption = "RTF CREATION":Width = 640:Height = 480:Center create edit as qlistbox left=10:top=10:width=600:height=400 end create create main as qmainmenu create menu1 as qmenuitem caption="Transfer into MS Word @." onclick=transferasword end create end create END CREATE SetWindowLong[Form.Handle, -8, 0] SetWindowLong[Application.Handle, -8, Form.Handle] Form.ShowModal sub transferasword blank.clear blank.additems "{\rtf1\ansi\deff0 {\fonttbl {\f0 Monotype Corsiva;}} blank.additems "{\f1 Arial;}{\f2 Arial Bold;}" blank.additems "{\colortbl;\red255\green0\blue0;\red0\green0\blue255; blank.additems "\red0\green100\blue0;\red0\green0\blue0;}" blank.additems "\paperw11909\paperh16834" blank.additems "\margl1440\margr1900\margt1800\margb1800" blank.additems "\landscape" blank.additems "\qc\fo\fs80\b\i HEADING" blank.additems "\par\par\b0\i0\fs24" blank.additems "\q\fo This should be paragraph 1. \par" blank.additems "\q\l1\cf1 This is line 1. \par" blank.additems "\q\cf2 This is \cf1 line \cf0 2. \par\par" blank.additems "\q\fo\cf3 This is \fs60 line \fs24 3. \par\par" blank.additems "\q\cf4 {\pard\li1200\ri1200\qj This is line 4 and all of this is " blank.additems "within one paragraph. The text will continue to add to " blank.additems "one another until the end of the paragraph has been " blank.additems "indicated. \par}\par" blank.additems "\q\l2 This is line 4. \par\par" blank.additems "\q\fo {\pard\keep\li1200\ri0\qj This is line 5 and all of this is within " blank.additems "one paragraph. The text will continue to add to " blank.additems "one another until the end of the paragraph has been " blank.additems "indicated. \par}\par" blank.additems "}" edit.text=blank.text blank.savetofile "c:\ms3\~common\rtftest.rtf" Object.CreateObject("word.basic") Object.AppShow Object.appmaximize("", 1) object.fileopen("c:\ms3\~common\rtftest.rtf") Object.Free end sub </pre> | <p>Font Colour</p> <p>Set the colours</p> <p>Entry 1: red255 green0 blue0</p> <p>Entry 2: Red0 Green0 Blue255 Etc.</p> <p>Font color CF2 (entry 2). Font color CF4 (entry 4)</p> <p>See colour picker to determine RGB values.</p> |

| SNO | CODING | EXPLANATION |
|-----|--|---|
| 5 | <pre> \$TYPECHECK ON \$INCLUDE <RapidQ2.inc> DIM Object AS QOLEOBJECT dim blank as qstringlist dim i as single:dim woord as string if direxists("c:\ms3")=0 then mkdir "c:\ms3" if direxists("c:\ms3\~common")=0 then mkdir "c:\ms3\~common" declare sub transferasword CREATE Form AS QFORM Caption = "RTF CREATION":Width = 640:Height = 480:Center create edit as qlistbox left=10:top=10:width=600:height=400 end create create main as qmainmenu create menu1 as qmenuitem caption="Transfer into MS Word @.":onclick=transferasword end create end create END CREATE SetWindowLong[Form.Handle, -8, 0] SetWindowLong[Application.Handle, -8, Form.Handle] Form.ShowModal sub transferasword blank.clear blank.additems "{\rtf1\ansi\deff0 {\fonttbl {\f0 Monotype Corsiva;}}" blank.additems "{\f1 Arial;}{\f2 Arial Bold;}}" blank.additems "{\colortbl\red255\green0\blue0;\red0\green0\blue255;" blank.additems "\red0\green100\blue0;\red0\green0\blue0;}" blank.additems "\paperw11909\paperh16834" blank.additems "\margl1440 \margr1900 \margt1800 \margb1800" blank.additems "\landscape" blank.additems "{\info {\title THIS IS A TITLE}" blank.additems "{\author Andre Botha}";blank.additems "{\ company MS3}" blank.additems "{\ creatim\yr2018\mo02\dy20\hr18\min00}" blank.additems "{\ doccomm https://www.ms3system.co.za})" blank.additems "\qc\ f0\fs80\b\i HEADING" blank.additems "\par\par\ b0\i0\fs24" blank.additems "\q\ f0 This should be paragraph 1. \par" blank.additems "\q\ f1\cf1 This is line 1. \par" blank.additems "\q\cf2 This is \cf1 line \cf0 2. \par\par" blank.additems "\q\ f0\cf3 This is \fs60 line \fs24 3. \par\par" blank.additems "\q\cf4 {\pard \li1200 \ri1200 \qi This is line 4 and all of this is " blank.additems "within one paragraph. The text will continue to add to " blank.additems "one another until the end of the paragraph has been " blank.additems "indicated. \par}\par" blank.additems "\q\ f2 This is line 4. \par\par" blank.additems "\q\ f0 {\pard \keep \li1200 \ri0 \qi This is line 5 and all of this is within " blank.additems "one paragraph. The text will continue to add to " blank.additems "one another until the end of the paragraph has been " blank.additems "indicated. \par}\par" blank.additems "}" edit.text=blank.text blank.savetofile "c:\ms3\~common\rtftest.rtf" Object.CreateObject("word.basic") Object.AppShow Object.appmaximize("", 1) object.fileopen("c:\ms3\~common\rtftest.rtf") Object.Free end sub </pre> | <p>Add document properties such as TITLE, AUTHOR, COMPANY, etc.</p> <p>Doc title. Author & Coy Creation date Web URL or Comment</p> |





| SNO | CODING | EX-PLANATION |
|-----|--|-------------------------------------|
| 6 | <pre> \$TYPECHECK ON \$INCLUDE <RapidQ2.inc> DIM Object AS QOLEBJECT dim blank as qstringlist dim i as single:dim woord as string if direxists("c:\ms3")=0 then mkdir "c:\ms3" if direxists("c:\ms3\~common")=0 then mkdir "c:\ms3\~common" declare sub transferasword CREATE Form AS QFORM Caption = "RTF CREATION":Width = 640:Height = 480:Center create edit as qlistbox left=10:top=10:width=600:height=400 end create create main as qmainmenu create menu1 as qmenuitem caption="Transfer into MS Word @.":onclick=transferasword end create end create END CREATE SetWindowLong(Form.Handle, -8, 0) SetWindowLong(Application.Handle, -8, Form.Handle) Form.ShowModal </pre> | Header & Footer and page numbering. |

| SNO | CODING | EX-PLANATION |
|-----|---|---|
| | <pre> sub transferasword blank.clear blank.additems "{\rtf1\ansi\deff0 {\fonttbl {\f0 Monotype Corsiva;}" blank.additems "{\f1 Arial;}{\f2 Arial Bold;}" blank.additems "{\colortbl;\red255\green0\blue0;\red0\green0\blue255;" blank.additems "\red0\green100\blue0;\red0\green0\blue0;}" blank.additems "\paperw11909\paperh16834" blank.additems "\margl1440 \margr1900 \margt1800 \margb1800" blank.additems "\landscape":blank.additems "{\info {\title THIS IS A TITLE}" blank.additems "{\author Andre Botha}":blank.additems "{\company MS3}" blank.additems "{\creatim\yr2018\mo02\dy20\hr18\min00}" blank.additems "{\doccomm https://www.ms3system.co.za}" blank.additems "{\header \pard\qc\plain\f2\fs22\i[Learn RTF here / {\b page.\chpgn}]" blank.additems "\par}" blank.additems "{\footer \pard\qc\plain\f2\fs22\i[By MS3 Systems]" blank.additems "\par}" blank.additems "\qc\fo\fs80\b\i HEADING" blank.additems "\par\par\b0\i0\fs24" blank.additems "\q\fo This should be paragraph 1. \par" blank.additems "\q\f1\cf1 This is line 1. \par" blank.additems "\q\cf2 This is \cf1 line \cf0 2. \par\par" blank.additems "\q\fo\cf3 This is \fs60 line \fs24 3. \par\par" blank.additems "\q\cf4 {\pard \li1200 \ri1200 \qi This is line 4 and all of this is " blank.additems "within one paragraph. The text will continue to add to " blank.additems "one another until the end of the paragraph has been " blank.additems "indicated. \par}\par" blank.additems "\q\fo This is line 4. \par\par" blank.additems "\q\fo {\pard \keep \li1200 \ri0 \qi This is line 5 and all of this is within " blank.additems "one paragraph. The text will continue to add to " blank.additems "one another until the end of the paragraph has been " blank.additems "indicated. \par}\par" blank.additems "\page" blank.additems "\qc\fo\fs80\b\i A NEW HEADING" blank.additems ""} edit.text=blank.text blank.savetofile "c:\ms3\~common\rtftest.rtf" Object.CreateObject("word.basic") Object.AppShow Object.appmaximize("", 1) object.fileopen("c:\ms3\~common\rtftest.rtf") Object.Free end sub </pre> | <p>Create header with auto page numbering. Create a footer.</p> |
| 7 | <pre> \$TYPECHECK ON \$INCLUDE <RapidQ2.inc> DIM Object AS QOLEOBJECT dim blank as qstringlist dim i as single:dim woord as string if direxists("c:\ms3")=0 then mkdir "c:\ms3" if direxists("c:\ms3\~common")=0 then mkdir "c:\ms3\~common" declare sub transferasword CREATE Form AS QFORM Caption = "RTF CREATION":Width = 640:Height = 480:Center create edit as qlistbox left=10:top=10:width=600:height=400 end create create main as qmainmenu create menu1 as qmenuitem caption="Transfer into MS Word @.":onclick=transferasword end create end create </pre> | <p>Create a URL link (hyperlink)</p> |



| SNO | CODING | EX-PLANATION |
|-----|--|--------------|
| | <pre> END CREATE SetWindowLong(Form.Handle, -8, 0) SetWindowLong(Application.Handle, -8, Form.Handle) Form.ShowModal sub transferasword blank.clear blank.additems "{\rtf1\ansi\deff0 {\fonttbl {\f0 Monotype Corsiva;}" blank.additems "{\f1 Arial;}{\f2 Arial Bold;}" blank.additems "{\colortbl;\red255\green0\blue0;\red0\green0\blue255;" blank.additems "\red0\green100\blue0;\red0\green0\blue0;}" blank.additems "\paperw11909\paperh16834" blank.additems "\margl1440 \margr1900 \margt1800 \margb1800" blank.additems "\landscape":blank.additems "{\info {\title THIS IS A TITLE}" blank.additems "{\author Andre Botha}";blank.additems "{\company MS3}" blank.additems "{\creatim\yr2018\mo02\dy20\hr18\min00}" blank.additems "{\doccomm https://www.ms3system.co.za}" blank.additems "{\header \pard\qc\plain\f2\fs22\i[Learn RTF here / {\b page.\chpgn}]" blank.additems "\par}" blank.additems "{\footer \pard\qc\plain\f2\fs22\i[By MS3 Systems]" blank.additems "\par}" blank.additems "\qc\fd\fs80\b\i HEADING" blank.additems "\par\par\b0\i0\fs24" blank.additems "\q\fd This should be paragraph 1. \par" blank.additems "\q\fd1\cf1 This is line 1. \par" blank.additems "\q\cf2 This is \cf1 line \cf2. \par\par" blank.additems "\q\fd\cf3 This is \fs60 line \fs24 3. \par\par" blank.additems "\q\cf4 {\pard\li1200\ri1200\qj This is line 4 and all of this is " blank.additems "within one paragraph. The text will continue to add to " blank.additems "one another until the end of the paragraph has been " blank.additems "indicated. \par}\par" blank.additems "\q\fd2 This is line 4. \par\par" blank.additems "\q\fd {\pard\keep\li1200\ri0\qj This is line 5 and all of this is within " blank.additems "one paragraph. The text will continue to add to " blank.additems "one another until the end of the paragraph has been " blank.additems "indicated. \par}\par\par" blank.additems "There are guides " blank.additems "{\field{* \fldinst{HYPERLINK" blank.additems chr\$(34)+"https://www.ms3system.co.za/" +chr\$(34) blank.additems "}}{\fldrslt{\ul for learning programming}}}" blank.additems "\page" blank.additems "\qc\fd\fs80\b\i A NEW HEADING" blank.additems ""} edit.text=blank.text blank.savetofile "c:\ms3\~common\rtftest.rtf" Object.CreateObject("word.basic") Object.AppShow Object.appmaximize("", 1) object.fileopen("c:\ms3\~common\rtftest.rtf") Object.Free end sub </pre> | |

This is line 5 and all of this is within one paragraph. The text will continue to add to one another until the end of the paragraph has been indicated.

<https://www.ms3system.co.za/>
Ctrl+Click to follow link

There are guides for learning programming



| SNO | CODING | EX-PLANATION |
|-----|---|--|
| 8 | <pre> \$TYPECHECK ON \$INCLUDE <RapidQ2.inc> DIM Object AS QOLEOBJECT dim blank as qstringlist dim i as single:dim woord as string if direxists("c:\ms3")=0 then mkdir "c:\ms3" if direxists("c:\ms3\~common")=0 then mkdir "c:\ms3\~common" declare sub transferasword CREATE Form AS QFORM Caption = "RTF CREATION":Width = 640:Height = 480:Center create edit as qlistbox left=10:top=10:width=600:height=400 end create create main as qmainmenu create menu1 as qmenuitem caption="Transfer into MS Word @.":onclick=transferasword end create end create END CREATE SetWindowLong[Form.Handle, -8, 0] SetWindowLong[Application.Handle, -8, Form.Handle] Form.ShowModal sub transferasword blank.clear blank.additems "{\rtf1\ansi\deff0 {\fonttbl {\f0 Monotype Corsiva;}}" blank.additems "{\f1 Arial;{\f2 Arial Bold;}}" blank.additems "{\colortbl;\red255\green0\blue0;\red0\green0\blue255;" blank.additems "\red0\green100\blue0;\red0\green0\blue0;}" blank.additems "\paperw11909\paperh16834" blank.additems "\margl1440 \margr1900 \margt1800 \margb1800" blank.additems "\landscape":blank.additems "{\info {\title THIS IS A TITLE}" blank.additems "{\author Andre Botha}":blank.additems "{\company MS3}" blank.additems "{\creatim\yr2018\mo02\dy20\hr18\min00}" blank.additems "{\doccomm https://www.ms3system.co.za}" blank.additems "{\header \pard\qc\plain\f2\fs22\i[Learn RTF here / {\b page.\chpgn}]" blank.additems "\par}" blank.additems "{\footer \pard\qc\plain\f2\fs22\i[By MS3 Systems]" blank.additems "\par}" blank.additems "\qc\f0\fs80\b\i HEADING" blank.additems "\par\par\b0\i0\fs24" blank.additems "\q\f0 This should be paragraph 1. \par" blank.additems "\q\f1\cf1 This is line 1. \par" blank.additems "\q\cf2 This is \cf1 line \cf0 2. \par\par" blank.additems "\q\f0\cf3 This is \fs60 line \fs24 3. \par\par" blank.additems "\q\cf4 {\pard \li1200 \ri1200 \qi This is line 4 and all of this is " blank.additems "within one paragraph. The text will continue to add to " blank.additems "one another until the end of the paragraph has been " blank.additems "indicated. \par}\par" blank.additems "\q\fs2 This is line 4. \par\par" blank.additems "\q\f0 {\pard \keep \li1200 \ri0 \qi This is line 5 and all of this is within " blank.additems "one paragraph. The text will continue to add to " blank.additems "one another until the end of the paragraph has been " blank.additems "indicated. \par}\par\par" blank.additems "There are guides " blank.additems "{\field{*\fldinst{HYPERLINK" blank.additems chr\$(34)+"https://www.ms3system.co.za/"+chr\$(34)}" blank.additems "}}{\fldrst{\ul for learning programming}}}" blank.additems "\par\par\qc" blank.additems "{\field\fldedit{*\fldinst { INCLUDEPICTURE \\d" </pre> | <p>Insert graphics (BMP, GIF, PNG, JPG)</p> <p>Set position. Start process</p> |

| SNO | CODING | EX-PLANATION |
|-----|---|---|
| | <pre> blank.additems chr\$(34)+"C:/ms3/mybis/gx/earth.gif"+chr\$(34) blank.additems "\ * MERGEFORMATINET }}{\fldrslt { }}" blank.additems "\ql\page" blank.additems "\qc\fd\fs80\b\i A NEW HEADING" blank.additems "" edit.text=blank.text blank.savetofile "c:\ms3\~common\rtftest.rtf" Object.CreateObject("word.basic") Object.AppShow Object.appmaximize("", 1) object.fileopen("c:\ms3\~common\rtftest.rtf") Object.Free end sub </pre> | <p>Id the file. Complete the process.</p> |
| 9 | <pre> \$TYPECHECK ON \$INCLUDE <RapidQ2.inc> DIM Object AS QOLEOBJECT dim blank as qstringlist dim i as single:dim woord as string if direxists("c:\ms3")=0 then mkdir "c:\ms3" if direxists("c:\ms3\~common")=0 then mkdir "c:\ms3\~common" declare sub transferasword CREATE Form AS QFORM Caption = "RTF CREATION":Width = 640:Height = 480:Center create edit as qlistbox left=10:top=10:width=600:height=400 end create create main as qmainmenu create menu1 as qmenuitem caption="Transfer into MS Word @.":onclick=transferasword end create end create END CREATE SetWindowLong[Form.Handle, -8, 0] SetWindowLong[Application.Handle, -8, Form.Handle] Form.ShowModal sub transferasword blank.clear blank.additems "{\rtf1\ansi\deff0 {\fonttbl {\fd Monotype Corsiva;}" blank.additems "{\f1 Arial;}{\f2 Arial Bold;}" blank.additems "{\colortbl;\red255\green0\blue0;\red0\green0\blue255;" blank.additems "\red0\green100\blue0;\red0\green0\blue0;}" blank.additems "\paperw11909\paperh16834" blank.additems "\margl1440 \margr1900 \margt1800 \margb1800" blank.additems "\landscape":blank.additems "{\info {\title THIS IS A TITLE}" blank.additems "{\author Andre Botha}:blank.additems "{\company MS3}" blank.additems "{\creatim\yr2018\mo02\dy20\hr18\min00}" blank.additems "{\doccomm https://www.ms3system.co.za}" blank.additems "{\header \pard\qc\plain\f2\fs22\i[Learn RTF here / {\b page.\ chpgn] }" blank.additems "\par}" blank.additems "{\footer \pard\qc\plain\f2\fs22\i[By MS3 Systems]" blank.additems "\par}" blank.additems "{\pard \pvmrg\phmrg\posxc\posyc \qc" blank.additems "\fs60 {\i MS3 SYSTEMs}" blank.additems "\line" blank.additems "\line\fs50 By A. Botha" blank.additems "\line\fs40 vs 1.1\par}" blank.additems "" edit.text=blank.text blank.savetofile "c:\ms3\~common\rtftest.rtf" Object.CreateObject("word.basic") </pre> | <p>Placing information in the center of the page (page cover)</p> |



| SNO | CODING | EX-PLANATION |
|-----|---|--------------|
| | <pre>Object.AppShow Object.appmaximize("", 1) object.fileopen("c:\ms3\~common\rtftest.rtf") Object.Free end sub</pre> | |

To create TABLES we will be required to create each row, one at a time.

| SNO | CODING | EX-PLANATION |
|-----|--|---|
| 1 | <pre>\$TYPECHECK ON \$INCLUDE <RapidQ2.inc> DIM Object AS GOLEOBJECT dim blank as qstringlist dim i as single:dim woord as string if direxists("c:\ms3")=0 then mkdir "c:\ms3" if direxists("c:\ms3\~common")=0 then mkdir "c:\ms3\~common" declare sub transferasword CREATE Form AS QFORM Caption = "RTF CREATION":Width = 640:Height = 480:Center create edit as qlistbox left=10:top=10:width=600:height=400 end create create main as qmainmenu create menu1 as qmenuitem caption="Transfer into MS Word @.":onclick=transferasword end create end create END CREATE SetWindowLong(Form.Handle, -8, 0) SetWindowLong(Application.Handle, -8, Form.Handle) Form.ShowModal sub transferasword blank.clear blank.additems "{\rtf1\ansi\deff0 {\fonttbl {\f0 Monotype Corsiva;}} blank.additems "{\f1 Arial;}{\f2 Arial Bold;}" blank.additems "{\colortbl;\red255\green0\blue0;\red0\green0\blue255; blank.additems "\red0\green100\blue0;\red0\green0\blue0;}" blank.additems "\paperw11909\paperh16834" blank.additems "\margl1440 \margr1900 \margt1800 \margb1800" blank.additems "\landscape":blank.additems "{\info {\title THIS IS A TITLE}" blank.additems "{\author Andre Botha}":blank.additems "{\company MS3}" blank.additems "{\creatim\yr2018\mo02\dy20\hr18\min00}" blank.additems "{\doccomm https://www.ms3system.co.za}" blank.additems "{\header \pard\qc\plain\f2\fs22\i[Learn RTF here / {\b page.\chpgn}]" blank.additems "\par}" blank.additems "{\footer \pard\qc\plain\f2\fs22\i[By MS3 Systems]" blank.additems "\par}" blank.additems "\qc\fs40 INFORMATION AS REQUIRED \fs20 \ql \par \par" blank.additems "{\trowd \trgaph180" blank.additems "\clbrdr\brdrw35\brdrdb\clbrdr\brdrw35\brdrdb" blank.additems "\clbrdrb\brdrw35\brdrdb\clbrdr\brdrw35\brdrdb\cellx1440" blank.additems "\pard\intb\fs30\qc\b SNO \cell" blank.additems "\clbrdr\brdrw35\brdrdb\clbrdr\brdrw35\brdrdb" blank.additems "\clbrdrb\brdrw35\brdrdb\clbrdr\brdrw35\brdrdb\cellx3880" blank.additems "\pard\intb\fs30\qc\b NAME \cell" blank.additems "\row}" blank.additems "{\trowd \trgaph180"</pre> | <p>The first row. Layout of cell (top and left)</p> <p>Layout of cell (bottom and right and width size)</p> <p>Layout of second cell (and size). The content per cell.</p> |

| SNO | CODING | EX-PLANATION |
|-----|--|--|
| | <pre> blank.additems "\clbrdrt\brdrw35\brdrs\clbrdrl\brdrw35\brdrs" blank.additems "\clbrdrb\brdrw35\brdrs\clbrdrr\brdrw35\brdrs" blank.additems "\clvertalc\cellx1440" blank.additems "\pard\intbl\fs20\qc\b0 1 \cell" blank.additems "\clbrdrt\brdrw35\brdrs\clbrdrl\brdrw35\brdrs" blank.additems "\clbrdrb\brdrw35\brdrs\clbrdrr\brdrw35\brdrs" blank.additems "\clvertalc\cellx3880" blank.additems "\pard\intbl\fs20\q\b0 Andre Botha \cell" blank.additems "\row)" blank.additems "]" edit.text=blank.text blank.savetofile "c:\ms3\~common\rtftest.rtf" Object.CreateObject("word.basic") Object.AppShow Object.appmaximize("", 1) object.fileopen("c:\ms3\~common\rtftest.rtf") Object.Free end sub </pre> | <p>The second row. Layout of cell (top and left) Layout of cell (bottom and right and width size) Layout of second cell (and size). The content per cell.</p> <p>CLBRDRT = Top CLBRDRL = Left CLBRDRB =bottom CLBRDRR = right</p> <p>CLVERTALC = vertical alignment (center) TALL (left), TALR (right).</p> <p>Brdrdb Double line (border) Brdrs Single Line (border)</p> |
| 2 | <pre> \$TYPECHECK ON \$INCLUDE <RapidQ2.inc> DIM Object AS GOLEOBJECT dim blank as qstringlist dim i as single:dim woord as string if direxists("c:\ms3")=0 then mkdir "c:\ms3" if direxists("c:\ms3\~common")=0 then mkdir "c:\ms3\~common" declare sub transferasword CREATE Form AS QFORM Caption = "RTF CREATION":Width = 640:Height = 480:Center create edit as qlistbox left=10:top=10:width=600:height=400 end create create main as qmainmenu create menu1 as qmenuitem caption="Transfer into MS Word @.":onclick=transferasword end create end create END CREATE SetWindowLong(Form.Handle, -8, 0) SetWindowLong(Application.Handle, -8, Form.Handle) Form.ShowModal sub transferasword blank.clear blank.additems "{\rtf1\ansi\deff0 {\fonttbl {\f0 Monotype Corsiva;}} blank.additems "{\f1 Arial;}{\f2 Arial Bold;}" blank.additems "{\colortbl;\red255\green0\blue0;\red0\green0\blue255; blank.additems "\red0\green100\blue0;\red0\green0\blue0;}" blank.additems "\paperw11909\paperh16834" blank.additems "\margl1440 \margr1900 \margt1800 \margb1800" blank.additems "\landscape":blank.additems "{\info {\title THIS IS A TITLE}" blank.additems "\author Andre Botha}":blank.additems "{\company MS3}" blank.additems "{\creatim\yr2018\mo02\dy20\hr18\min00}" blank.additems "{\doccomm https://www.ms3system.co.za}" blank.additems "{\header \pard\qc\plain\f2\fs22\i[Learn RTF here / {\b page.\chpgn}]" blank.additems "\par}" </pre> | <p>Colouring the cells</p> <p>The colour tables are set {1,2,3, etc.}</p> |



| SNO | CODING | EX-PLANATION |
|-----|---|--|
| | <pre> blank.additems "{\ footer \pard\ qc\ plain\ f2\ fs22\ i[By MS3 Systems]" blank.additems "\par}" blank.additems "\ qc\ fs40 INFORMATION AS REQUIRED \ fs20 \ q\ \par \par" blank.additems "{\ trowd \ trgaph180" blank.additems "\ clbrdr\ brdrw35\ brdrdb\ clbrdr\ brdrw35\ brdrdb" blank.additems "\ clbrdrb\ brdrw35\ brdrdb\ clbrdr\ brdrw35\ brdrdb" blank.additems "\ clcfpat2\ clshdng5000\ cellx1440" blank.additems "\ pard\ intbl\ fs30\ qc\ b SNO \ cell" blank.additems "\ clbrdr\ brdrw35\ brdrdb\ clbrdr\ brdrw35\ brdrdb" blank.additems "\ clbrdrb\ brdrw35\ brdrdb\ clbrdr\ brdrw35\ brdrdb" blank.additems "\ clcfpat2\ clshdng5000\ cellx3880" blank.additems "\ pard\ intbl\ fs30\ qc\ b NAME \ cell" blank.additems "\ row}" blank.additems "{\ trowd \ trgaph180" blank.additems "\ clbrdr\ brdrw35\ brdrs\ clbrdr\ brdrw35\ brdrs" blank.additems "\ clbrdrb\ brdrw35\ brdrs\ clbrdr\ brdrw35\ brdrs" blank.additems "\ clvertalc\ cellx1440" blank.additems "\ pard\ intbl\ fs20\ qc\ b0 1 \ cell" blank.additems "\ clbrdr\ brdrw35\ brdrs\ clbrdr\ brdrw35\ brdrs" blank.additems "\ clbrdrb\ brdrw35\ brdrs\ clbrdr\ brdrw35\ brdrs" blank.additems "\ clvertalc\ cellx3880" blank.additems "\ pard\ intbl\ fs20\ q\ b0 Andre Botha \ cell" blank.additems "\ row}" blank.additems "}" edit.text=blank.text blank.savetofile "c:\ms3\~common\rtftest.rtf" Object.CreateObject("word.basic") Object.AppShow Object.appmaximize("", 1) object.fileopen("c:\ms3\~common\rtftest.rtf") Object.Free end sub </pre> | <p>Select colour palette 2 and shade at 5000% (the higher, the more intensive) If no colour was selected, it will be a solid grey.</p> |

To print a file via MS Word ®. The advantage of printing via MS Word ® is that you don't have to do any printer settings as with standard FreeQ printing functions. MS Word ® has completed all the settings for you. You must only ensure that your page layout (table headings per a page, etc.) is done correctly.

| SNO | CODING | EX-PLANATION |
|-----|--|--------------|
| 1 | <pre> \$TYPECHECK ON \$INCLUDE <RapidQ2.inc> DIM Object AS GOLEOBJECT dim blank as qstringlist dim i as single:dim woord as string if direxists("c:\ms3")=0 then mkdir "c:\ms3" if direxists("c:\ms3\~common")=0 then mkdir "c:\ms3\~common" declare sub transferasword CREATE Form AS QFORM Caption = "RTF CREATION":Width = 640:Height = 480:Center create edit as qlistbox left=10:top=10:width=600:height=400 end create create main as qmainmenu create menu1 as qmenuitem caption="Transfer into MS Word ®":onclick=transferasword end create end create END CREATE SetWindowLong(Form.Handle, -8, 0) </pre> | |



| SNO | CODING | EX-PLANATION |
|-----|---|--------------|
| | <pre> SetWindowLong(Application.Handle, -8, Form.Handle) Form.ShowDialog sub transferasword blank.clear blank.additems "{\rtf1\ansi\deff0 {\fonttbl {\f0 Monotype Corsiva;}} blank.additems "{\f1 Arial;}{\f2 Arial Bold;}" blank.additems "{\colortbl;\red255\green0\blue0;\red0\green0\blue255; blank.additems "\red0\green100\blue0;\red0\green0\blue0;}" blank.additems "\paperw11909\paperh16834" blank.additems "\margl1440 \margr1900 \margt1800 \margb1800" blank.additems "\landscape":blank.additems "{\info {\title THIS IS A TITLE}" blank.additems "{\author Andre Botha}":blank.additems "{\company MS3}" blank.additems "{\creatim\yr2018\mo02\dy20\hr18\min00}" blank.additems "{\doccomm https://www.ms3system.co.za}" blank.additems "{\header \pard\qc\plain\f2\fs22\i Learn RTF here / {\b page.\chpgn}]" blank.additems "\par}" blank.additems "{\footer \pard\qc\plain\f2\fs22\i By MS3 Systems]" blank.additems "\par}" blank.additems "{\colortbl;\red0\green255\blue0;\red0\green0\blue255;}" blank.additems "\qc\fs40 INFORMATION AS REQUIRED \fs20 \ql \par \par" blank.additems "{\trowd \trgaph180" blank.additems "\clbrdrt\brdrw35\brdrdb\clbrdr\brdrw35\brdrdb" blank.additems "\clbrdb\brdrw35\brdrdb\clbrdr\brdrw35\brdrdb" blank.additems "\clcfpat2\clshdng5000\cellx1440" blank.additems "\pard\intbl\fs30\qc\b SNO \cell" blank.additems "\clbrdrt\brdrw35\brdrdb\clbrdr\brdrw35\brdrdb" blank.additems "\clbrdb\brdrw35\brdrdb\clbrdr\brdrw35\brdrdb" blank.additems "\clcfpat2\clshdng5000\cellx3880" blank.additems "\pard\intbl\fs30\qc\b NAME \cell" blank.additems "\row}" blank.additems "{\trowd \trgaph180" blank.additems "\clbrdrt\brdrw35\brdrs\clbrdr\brdrw35\brdrs" blank.additems "\clbrdb\brdrw35\brdrs\clbrdr\brdrw35\brdrs" blank.additems "\clvertalc\cellx1440" blank.additems "\pard\intbl\fs20\qc\b0 1 \cell" blank.additems "\clbrdrt\brdrw35\brdrs\clbrdr\brdrw35\brdrs" blank.additems "\clbrdb\brdrw35\brdrs\clbrdr\brdrw35\brdrs" blank.additems "\clvertalc\cellx3880" blank.additems "\pard\intbl\fs20\ql\b0 Andre Botha \cell" blank.additems "\row}" blank.additems "}" edit.text=blank.text blank.savetofile "c:\ms3\~common\rtftest.rtf" Object.CreateObject("word.basic") Object.AppShow Object.appmaximize("", 1) object.fileopen("c:\ms3\~common\rtftest.rtf") IF MESSAGEDLG("Print Document?", 3 , mbYes OR mbNo , 0) = mrYes THEN object.fileprint end if Object.Free end sub </pre> | |



22.6 Reading/ MS Excel ® spreadsheet into FreeQ program

To be able to quickly convert any MS Excel ® spreadsheet, the program needs to be able to read the file (XLS & XLSX) and place it within the FreeQ QStringGrid (for instance). The problem that arises is that MS Excel versions till 2003 and versions 2007/2010/2013/etc. differs. To fix this we will use the *MS³System MS Excel convertor ©* to firstly convert it so that it might be read as normal text into the FreeQ spreadsheet.

You need to distribute this EXE file (*MS³System MS Excel convertor ©*) with your program as a package. Secondly you need to have the same spreadsheet layout (headers and columns) as the document being imported – so this should be specific task driven. The sequence of the execution of the coding is as follows:

- Await user to click menu button to load data.
- Confirm if XLSX, if so then convert.
- Load the file (XLS) into the FreeQ spreadsheet.

We will code the program in 3 phases, (1) the structure and (2) execution of conversion and (3) load data into spreadsheet.

| SNO | CODING | EX-PLANATION |
|-----|--|--|
| 1 | <pre> \$TYPECHECK ON \$INCLUDE <RapidQ2.inc> dim blank as qstringlist dim xi as single:dim woord as string:dim pi as single if direxists("c:\ms3")=0 then mkdir "c:\ms3" if direxists["c:\ms3\~common"]=0 then mkdir "c:\ms3\~common" declare sub convertfiletofreeq CREATE Form AS QFORM Caption = "MS Excel":Width = 640:Height = 480:Center create mainlist as qstringgrid left=10:top=10:width=550:height=280 colcount=4:rowcount=10 cell(0,0)="Sno":colwidths(0)=40 cell(1,0)="Employee Nr":colwidths(1)=90 cell(2,0)="Ini":colwidths(2)=50 cell(3,0)="Surname":colwidths(3)=350 end create create main as qmainmenu create menu1 as qmenuItem caption="Import MS Excel ® data" onclick=convertfiletofreeq end create end create END CREATE SetWindowLong(Form.Handle, -8, 0) SetWindowLong(Application.Handle, -8, Form.Handle) </pre> | <p>The original document will be loaded by the convertor and then converted to a new file that will be stored within this folder (temporary). The stringgrid whereby data will be loaded into.</p> <p>The button to request the load of the MS Excel ® file.</p> |

| SNO | CODING | EX-PLANATION |
|-----|--|---|
| | <pre> Form.ShowModal sub convertfiletofreeq for xi = 1 to mainlist.rowcount-1 for pi = 0 to mainlist.colcount-1 mainlist.cell(pi,xi)="" next pi next xi end sub </pre> | <p>Clear the register before loading the file.</p> |
| 2 | <pre> \$TYPECHECK ON \$INCLUDE <RapidQ2.inc> \$include "qshfileoperation.inc" dim shfile as qshfileoperation dim blank as qstringlist dim kykhier as string:kykhier=curdir\$ dim xi as single:dim woord as string:dim pi as single if direxists("c:\ms3")=0 then mkdir "c:\ms3" if direxists("c:\ms3\~common")=0 then mkdir "c:\ms3\~common" declare sub convertfiletofreeq CREATE Form AS QFORM Caption = "MS Excel":Width = 640:Height = 480:Center create mainlist as qstringgrid left=10:top=10:width=550:height=280 colcount=4:rowcount=10 cell(0,0)="Sno":colwidths(0)=40 cell(1,0)="Employee Nr":colwidths(1)=90 cell(2,0)="Ini":colwidths(2)=50 cell(3,0)="Surname":colwidths(3)=350 end create create main as qmainmenu create menu1 as qmenuitem caption="Import MS Excel @ data" onclick=convertfiletofreeq end create end create END CREATE SetWindowLong(Form.Handle, -8, 0) SetWindowLong[Application.Handle, -8, Form.Handle] Form.ShowModal sub convertfiletofreeq for xi = 1 to mainlist.rowcount-1 for pi = 0 to mainlist.colcount-1 mainlist.cell(pi,xi)="" next pi next xi if fileexists("c:\ms3\~common\tr07.xlsx")=1 then kill ("c:\ms3\~common\tr07.xlsx") if fileexists("c:\ms3\~common\tr03.xls")=1 then kill ("c:\ms3\~common\tr03.xls") woord="c:\ms3\mybis\hrsec.xlsx" shfile.Copy(woord,"c:\ms3\~common\tr07.xlsx") Shell kykhier+"\xlstrans.exe" if fileexists(kykhier+"\ldtba.fet")=1 then kill kykhier+"\ldtba.fet" end sub </pre> | <p>It appears as if nothing has happened when you run the program, but actually the original file has been copied to ~COMMON location and converted for further use.</p> <p>Ensure the XLTRANS.EXE is within your program's directory (CURDIR\$)</p> <p>Delete previous working resource files (files required by program to convert the original). The file to be loaded. Copy to temp file. Run conversion. More temporary files to be removed.</p> |



| SNO | CODING | EX-PLANATION |
|-----|---|--|
| 3 | <pre> \$APPTYPE GUI \$TYPECHECK ON \$INCLUDE <RapidQ2.inc> \$include "qshfileoperation.inc" \$INCLUDE "Qxls.inc" \$ESCAPECHARS off dim bx\$ as string:Dim Mask\$ as String Dim Sourcebrowse as Integer:Dim S as Long Dim x as Integer:Dim xx as Integer Dim Filename\$ as String:Dim DestFilename\$ as String Dim File as QFileStream Dim NumberofFiles as Integer Dim MinRow as Integer:Dim MaxRow as Integer Dim MinCol as Integer:Dim MaxCol as Integer Dim j0 as Integer:Dim j1 as Integer:Dim j2 as Integer Dim q\$ as String:Dim q1\$ as String:Dim b\$ as String dim shfile as qshfileoperation dim blank as qstringlist dim kykhier as string kykhier=curdir\$ dim xi as single:dim woord as string:dim pi as single if direxists("c:\ms3")=0 then mkdir "c:\ms3" if direxists("c:\ms3\~common")=0 then mkdir "c:\ms3\~common" declare sub convertfiletofreeq declare sub callexcelfile declare sub closeexcel CREATE Form AS QFORM Caption = "MS Excel":Width = 640:Height = 480:Center onclose=closeexcel create mainlist as qstringgrid left=10:top=10:width=550:height=280 colcount=4:rowcount=10 cell(0,0)="Sno":colwidths(0)=40 cell(1,0)="Employee Nr":colwidths(1)=90 cell(2,0)="Ini":colwidths(2)=50 cell(3,0)="Surname":colwidths(3)=350 end create create gauge as qgauge top=1:left=10:width=610:height=10:forecolor=255 end create create main as qmainmenu create menu1 as qmenuitem caption="Import MS Excel @ data" onclick=convertfiletofreeq end create end create END CREATE Dim RiEd as QRichEdit RiEd.parent = form:RiEd.left=8:RiEd.top=300:RiEd.width = 600:RiEd.height = 100 RiEd.visible = 1 SetWindowLong(Form.Handle, -8, 0) SetWindowLong(Application.Handle, -8, Form.Handle) Form.ShowModal sub convertfiletofreeq for xi = 1 to mainlist.rowcount-1 for pi = 0 to mainlist.colcount-1 mainlist.cell(pi,xi)="" next pi next xi </pre> | <p>Load the Excel data into the FreeQ stringgrid.</p> <p>Include Excel functions. Ensure ESC CHARS is off. Some strings and numerical variables required by the Excel functions. Ensure they don't class with your general variable usages.</p> <p>Call the Excel doc into your spreadsheet,</p> <p>Close the Excel functions when you close your program.</p> <p>Gauge to indicate progress of loading the Excel document into your FreeQ String Grid.</p> <p>Some feedback regarding the process of loading the MS Excel spreadsheet. This should actually be invisible, but for example purposes, I will leave it visible.</p> |



| SNO | CODING | EX-PLANATION |
|-----|---|---|
| | <pre> if fileexists("c:\ms3\~common\tr07.xlsx")=1 then kill ("c:\ms3\~common\tr07.xlsx") if fileexists("c:\ms3\~common\tr03.xls")=1 then kill ("c:\ms3\~common\tr03.xls") woord="c:\ms3\mybis\hrsec.xlsx" shfile.Copy(woord,"c:\ms3\~common\tr07.xlsx") shell kykhier+"xlstrans.exe" callexcelfile if fileexists[kykhier+"\ldtba.fet"]=1 then kill kykhier+"\ldtba.fet" end sub sub callexcelfile if fileexists("c:\ms3\~common\tr03.xls")=1 then DIM ret As LONG, ws As LONG, ns As LONG, maxrow AS LONG Dim d\$ as String b=0:maxrow=0 FileSpec(b)="c:\ms3\~common\tr03.xls" ret = xlsOpen ns=ret RiEd.clear RiEd.addstring "Excel file name "+FileSpec(b) RiEd.addstring "# sheets in file "+str\$(ns) ried.addstrings "" For j0 = 1 to 1 RiEd.addstring "_____" MinRow = xlsMINROW(j0):MaxRow = xlsMAXROW(j0) MinCol = xlsMINCOL(j0):MaxCol = xlsMAXCOL(j0) RiEd.addstring "SHEET: "+str\$(j0) RiEd.addstring " rows used "+str\$(MinRow)+" - "+str\$(MaxRow) RiEd.addstring " columns used "+str\$(MinCol)+" - "+str\$(MaxCol) mainlist.colcount=maxcol+1:mainlist.rowcount=maxrow+1 mainlist.defaultrowheight=18 RiEd.addstring b\$ gauge.max=maxrow For j1 = MinRow to MaxRow gauge.position=j1 For j2 = MinCol to MaxCol q\$=xlsREAD(j0,j1,j2) mainlist.cell[j2,j1]=lcase\$(q\$) Next j2 Next j1 Next j0 end if end sub sub closeexcel ret = xlsClose end sub </pre> | <p>After converting the XLSX file, call the loader program. If the file was successfully converted TRO3.XLS would be created, if successful then execute ...</p> <p>File name to be loaded. Open the XLS file.</p> <p>File name displayed. Total active sheets within the Excel © Spreadsheet</p> <p>Loop the activate sheets. Total activate rows and cols per sheet (J0)</p> <p>Display info regarding the MS Excel © spreadsheet. Prepare your spreadsheet to be the same as the active</p> <p>Loop the rows and cols and transfer cell content into the FreeQ String Grid. If there is a formula to calculate a result, the result will be loaded and not the actual formula.</p> <p>Close the MS Excel Function to free memory when you close the program.</p> |

22.7 Transferring to MS Excel ®

There are a few methods to transfer data towards MS Excel ®. They however differ in functionality and speed.

22.7.1 CSV

This is the easiest method of transferring information towards **MS Excel**® as indicated by my friend, Bruce Williams. You simply replace the separator character with “;” as **CSV** is a **MS Excel**® format whereby the cells are separated by a ;. So **CSV** is actually a file format and not a method of coding.

The **disadvantage** is that no formatting can be done (no cell borders, colouring of cells, cell widths, etc.) It is however immediate (extremely fast) – you will however spend some time on the formatting of your cells, unless if you have MS Excel vs 2007+ whereby auto formatting is a click away from completion. **The other disadvantage** is that due to the ; is used to separate the cells, the user is not allowed to type any ; character within the cells.

| SNO | CODING | EXPLANATION |
|-----|---|---|
| 1 | <pre> \$TYPECHECK ON \$INCLUDE <RapidQ2.inc> \$include <qrun.inc> dim runme as qrun if direxists("c:\ms3")=0 then mkdir "c:\ms3" if direxists("c:\ms3\~common")=0 then mkdir "c:\ms3\~common" dim i as single declare sub updateinfoexcel(col%,row%,value\$) declare sub openwithexcel CREATE Form AS QFORM Caption = "MS Excel".Width = 640:Height = 480:Center create mainlist as qstringgrid left=10:top=10:width=550:height=280 colcount=4:rowcount=10 cell(0,0)="Sno":colwidths(0)=40 cell(1,0)="Employee Nr":colwidths(1)=90 cell(2,0)="Ini":colwidths(2)=50 cell(3,0)="Surname":colwidths(3)=350 separator=";" adoptions(goediting,goalwaysshoweditor,gotabs) onsetedittext=updateinfoexcel end create create gauge as qgauge top=1:left=10:width=610:height=10:forecolor=255 end create create main as qmainmenu create menu1 as qmenuitem caption="Open with MS Excel CSV":onclick=openwithexcel end create end create END CREATE SetWindowLong(Form.Handle, -8, 0) SetWindowLong(Application.Handle, -8, Form.Handle) if fileexists("c:\ms3\~common\tr04.csv")=1 then mainlist.loadfromfile ("c:\ms3\~common\tr04.csv",0,0,mainlist.rowcount) end if Form.ShowModal sub updateinfoexcel(col%,row%,value\$) for i = 1 to mainlist.rowcount-1 mainlist.cell(0,i)="" if mainlist.cell(1,i)<>"" then mainlist.cell(0,i)=str\$(i) </pre> | <p>Save as you type to the CSV file (comma point separated).</p> <p>Activate separator as comma point. As you type save...</p> <p>Load the file if exist.</p> <p>Store file. Number SNO column.</p> |

| SNO | CODING | EXPLANATION |
|-----|--|--|
| 2 | <pre> next i mainlist.savetofile ("c:\ms3\~common\tr04.csv",0,0,mainlist.rowcount) end sub sub openwithexcel runme.filerun ("c:\ms3\~common\tr04.csv",1) end sub </pre> | <p>Store as CSV file.</p> <p>Open with associated program being MS Excel[®]</p> |

22.7.2 SLK

SLK is yet another format. It has the ability to format the table with cell borders, cell width, but only cell shading, no colouring. It is a bit complicated to understand the syntax, but once understood it is an **extremely effective method of transferring information as it is immediate and accurate with cell alignment capabilities and formulas for auto calculations.**

The **disadvantage** is no cell or row colour shading, only shading.

| SNO | CODING | EXPLANATION |
|-----|--|-------------|
| 1 | <pre> \$TYPECHECK ON \$INCLUDE <RapidQ2.inc> \$include <qrun.inc> dim runme as qrun if direxists("c:\ms3")=0 then mkdir "c:\ms3" if direxists("c:\ms3\~common")=0 then mkdir "c:\ms3\~common" dim i as single:dim p as single dim blank as qstringlist declare sub openwithexcel CREATE Form AS QFORM Caption = "MS Excel SLK":Width = 640:Height = 480:Center create main as qstringgrid left=10:top=10:width=550:height=280 colcount=4:rowcount=10 cell(0,0)="Sno":colwidths(0)=40 cell(1,0)="Employee Nr":colwidths(1)=90 cell(2,0)="Ini":colwidths(2)=50 cell(3,0)="Surname":colwidths(3)=350 separator=chr\$(240) addoptions(goediting,goalwaysshoweditor,gotabs) end create create gauge as qqauge top=1:left=10:width=610:height=10:forecolor=255 end create create main5 as qmainmenu create menu1 as qmenuitem caption="Open with MS Excel":onclick=openwithexcel end create end create END CREATE SetWindowLong(Form.Handle, -8, 0) SetWindowLong(Application.Handle, -8, Form.Handle) Form.ShowModal sub openwithexcel for i = 1 to main.rowcount-1 main.cell(0,i)=" " if main.cell(1,i)>" " then main.cell(0,i)=str\$(i) next i </pre> | |

| SNO | CODING | EXPLANATION |
|-----|--|---|
| | <pre> if main.cell[1,i]<>"" then main.cell[0,i]=str\$(i) next i blank.clear blank.additems "ID;P" blank.additems "P;PGeneral" blank.additems "C;Y3;X1;K"+chr\$(34)+"SNO"+chr\$(34) blank.additems "C;Y3;X2;K"+chr\$(34)+"EMPLOYEE NR"+chr\$(34) blank.additems "C;Y3;X3;K"+chr\$(34)+"INI"+chr\$(34) blank.additems "C;Y3;X4;K"+chr\$(34)+"SURNAME"+chr\$(34) blank.additems "E" blank.savetofile ("c:\ms3\~common\tr04.slk") runme.filerun ("c:\ms3\~common\tr04.slk",1) end sub </pre> | <p>Activate SLK format General type of sheet Cell(1,3)= SNO Cell(2,3)= EMPLOY... Cell(3,3)=INI Cell(4,3)= SURNAME Close the SLK sheet Save SLK format Call SLK association. First row/Col = 1,1</p> |
| 2 | <pre> \$TYPECHECK ON \$INCLUDE <RapidQ2.inc> \$include <qrun.inc> dim runme as qrun if direxists("c:\ms3")=0 then mkdir "c:\ms3" if direxists("c:\ms3\~common")=0 then mkdir "c:\ms3\~common" dim i as single:dim p as single dim blank as qstringlist declare sub openwithexcel CREATE Form AS QFORM Caption = "MS Excel SLK":Width = 640:Height = 480:Center create main as qstringgrid left=10:top=10:width=550:height=280 colcount=4:rowcount=10 cell(0,0)="Sno":colwidths(0)=40 cell(1,0)="Employee Nr":colwidths(1)=90 cell(2,0)="Ini":colwidths(2)=50 cell(3,0)="Surname":colwidths(3)=350 cell(1,1)="25484pe":cell(2,1)="A":cell(3,1)="Botha" cell(1,2)="42343pf":cell(2,2)="M":cell(3,2)="de Lange" cell(1,3)="24138pf":cell(2,3)="SA":cell(3,3)="Swartz" separator=chr\$(240) addoptions[goediting,goalwaysshoweditor,gotabs] end create create gauge as qgauge top=1:left=10:width=610:height=10:forecolor=255 end create create main5 as qmainmenu create menu1 as qmenuitem caption="Open with MS Excel":onclick=openwithexcel end create end create END CREATE SetWindowLong(Form.Handle, -8, 0) SetWindowLong(Application.Handle, -8, Form.Handle) Form.ShowModal sub openwithexcel for i = 1 to main.rowcount-1 main.cell(0,i)="" if main.cell[1,i]<>"" then main.cell[0,i]=str\$(i) next i blank.clear blank.additems "ID;P" blank.additems "P;PGeneral" blank.additems "C;Y1;X1;K"+chr\$(34)+"SNO"+chr\$(34) blank.additems "C;Y1;X2;K"+chr\$(34)+"EMPLOYEE NR"+chr\$(34) blank.additems "C;Y1;X3;K"+chr\$(34)+"INI"+chr\$(34) </pre> | <p>Add the content cells to the spreadsheet (using a loop as the information is not fixed)</p> |

| SNO | CODING | EXPLANATION |
|-----|---|--|
| | <pre> blank.additems "C;Y1;X4;K"+chr\$(34)+"SURNAME"+chr\$(34) for i = 1 to main.rowcount-1 if main.cell(1,i)<>"" then for p = 0 to main.colcount-1 blank.additems "C;Y"+str\$(i+1)+";X"+str\$(p+1)+";K"+chr\$(34)+main.cell(p,i)+chr\$(34) next p end if next i blank.additems "E" blank.savetofile ("c:\ms3\~common\tr04.slk") runme.filerun ("c:\ms3\~common\tr04.slk",1) end sub </pre> | <p>Loop rows If valid entry ... Loop cols Add info to cell (note the i+1 and p+1 – remember FREEQ starts at 0,0 and Excel 1,1.</p> |
| 3 | <pre> \$TYPECHECK ON \$INCLUDE <RapidQ2.inc> \$include <qrun.inc> dim runme as qrun if direxists("c:\ms3")=0 then mkdir "c:\ms3" if direxists("c:\ms3\~common")=0 then mkdir "c:\ms3\~common" dim i as single:dim p as single dim blank as qstringlist declare sub openwithexcel CREATE Form AS QFORM Caption = "MS Excel SLK":Width = 640:Height = 480:Center create main as qstringgrid left=10:top=10:width=550:height=280 colcount=5:rowcount=10 cell(0,0)="Sno":colwidths(0)=40 cell(1,0)="Employee Nr":colwidths(1)=90 cell(2,0)="Ini":colwidths(2)=50 cell(3,0)="Surname":colwidths(3)=250 cell(4,0)="Paid":colwidths(4)=50 cell(1,1)="25484pe":cell(2,1)="A":cell(3,1)="Botha":cell(4,1)="143" cell(1,2)="42343pf":cell(2,2)="M":cell(3,2)="de Lange":cell(4,2)="36.50" cell(1,3)="24138pf":cell(2,3)="SA":cell(3,3)="Swartz":cell(4,3)="252.36" separator=chr\$(240) addoptions(goediting,goalwaysshoweditor,gotabs) end create create gauge as qgauge top=1:left=10:width=610:height=10:forecolor=255 end create create main5 as qmainmenu create menu1 as qmenuitem caption="Open with MS Excel":onclick=openwithexcel end create end create END CREATE SetWindowLong(Form.Handle, -8, 0) SetWindowLong(Application.Handle, -8, Form.Handle) Form.ShowModal sub openwithexcel for i = 1 to main.rowcount-1 main.cell(0,i)="" if main.cell(1,i)<>"" then main.cell(0,i)=str\$(i) next i blank.clear blank.additems "ID;P" blank.additems "P;PGeneral" blank.additems "P;P_["+chr\$(34)+"R"+chr\$(34)+"* ####,##0.00_]" blank.additems "C;Y1;X1;K"+chr\$(34)+"SNO"+chr\$(34) blank.additems "C;Y1;X2;K"+chr\$(34)+"EMPLOYEE NR"+chr\$(34) </pre> | <p>Format (assigning numbers and converting as currency).</p> <p>Code the layout (R ZAR)</p> |



| SNO | CODING | EXPLANATION | | | | | | | | | | | | | | | | | | | | | | | | | | | | | | | | | | | | |
|-----|--|---|-----|----------|----------|---|---|---|-----|-------------|-----|---------|------|---|---|---------|---|-------|----------|---|---|---------|---|----------|---------|---|---|---------|----|--------|----------|---|--|--|--|--|--|---|
| | <pre> blank.additems "C;Y1;X3;K"+chr\$(34)+"INI"+chr\$(34) blank.additems "C;Y1;X4;K"+chr\$(34)+"SURNAME"+chr\$(34) blank.additems "C;Y1;X5;K"+chr\$(34)+"PAID"+chr\$(34) for i = 1 to main.rowcount-1 if main.cell(1,i)>" " then for p = 0 to main.colcount-1 if p>4 then blank.additems "C;Y"+str\$(i+1)+";X"+str\$(p+1)+";K"+chr\$(34)+main.cell(p,i)+chr\$(34) end if if p=4 then blank.additems "C;Y"+str\$(i+1)+";X"+str\$(p+1)+";K"+main.cell(p,i) blank.additems "F;P1;C5" end if next p end if next i blank.additems "E" blank.savetofile ("c:\ms3\~common\tr04.slk") runme.filerun ("c:\ms3\~common\tr04.slk",1) end sub </pre> <table border="1"> <thead> <tr> <th></th> <th>A</th> <th>B</th> <th>C</th> <th>D</th> <th>E</th> </tr> </thead> <tbody> <tr> <td>1</td> <td>SNO</td> <td>EMPLOYEE NR</td> <td>INI</td> <td>SURNAME</td> <td>PAID</td> </tr> <tr> <td>2</td> <td>1</td> <td>25484pe</td> <td>A</td> <td>Botha</td> <td>R 143.00</td> </tr> <tr> <td>3</td> <td>2</td> <td>42343pf</td> <td>M</td> <td>de Lange</td> <td>R 36.50</td> </tr> <tr> <td>4</td> <td>3</td> <td>24138pf</td> <td>SA</td> <td>Swartz</td> <td>R 252.36</td> </tr> <tr> <td>5</td> <td></td> <td></td> <td></td> <td></td> <td></td> </tr> </tbody> </table> | | A | B | C | D | E | 1 | SNO | EMPLOYEE NR | INI | SURNAME | PAID | 2 | 1 | 25484pe | A | Botha | R 143.00 | 3 | 2 | 42343pf | M | de Lange | R 36.50 | 4 | 3 | 24138pf | SA | Swartz | R 252.36 | 5 | | | | | | <p>Column 4 is number so if not column 4 then ...</p> <p>If column 4 then Plot numbers (no "") Add currency format.</p> |
| | A | B | C | D | E | | | | | | | | | | | | | | | | | | | | | | | | | | | | | | | | | |
| 1 | SNO | EMPLOYEE NR | INI | SURNAME | PAID | | | | | | | | | | | | | | | | | | | | | | | | | | | | | | | | | |
| 2 | 1 | 25484pe | A | Botha | R 143.00 | | | | | | | | | | | | | | | | | | | | | | | | | | | | | | | | | |
| 3 | 2 | 42343pf | M | de Lange | R 36.50 | | | | | | | | | | | | | | | | | | | | | | | | | | | | | | | | | |
| 4 | 3 | 24138pf | SA | Swartz | R 252.36 | | | | | | | | | | | | | | | | | | | | | | | | | | | | | | | | | |
| 5 | | | | | | | | | | | | | | | | | | | | | | | | | | | | | | | | | | | | | | |
| 4 | <pre> \$TYPECHECK ON \$INCLUDE <RapidQ2.inc> \$include <qrun.inc> dim runme as qrun if direxists("c:\ms3")=0 then mkdir "c:\ms3" if direxists("c:\ms3\~common")=0 then mkdir "c:\ms3\~common" dim i as single:dim p as single:dim totaal as double dim blank as qstringlist declare sub openwithexcel CREATE Form AS QFORM Caption = "MS Excel SLK":Width = 640:Height = 480:Center create main as qstringgrid left=10:top=10:width=550:height=280 colcount=5:rowcount=10 cell(0,0)="Sno":colwidths(0)=40 cell(1,0)="Employee Nr":colwidths(1)=90 cell(2,0)="Ini":colwidths(2)=50 cell(3,0)="Surname":colwidths(3)=250 cell(4,0)="Paid":colwidths(4)=50 cell(1,1)="25484pe":cell(2,1)="A":cell(3,1)="Botha":cell(4,1)="143" cell(1,2)="42343pf":cell(2,2)="M":cell(3,2)="de Lange":cell(4,2)="36.50" cell(1,3)="24138pf":cell(2,3)="SA":cell(3,3)="Swartz":cell(4,3)="252.36" separator=chr\$(240) addoptions(goediting,goalwaysshoweditor,gotabs) end create create gauge as qgauge top=1:left=10:width=610:height=10:forecolor=255 end create create main5 as qmainmenu create menu1 as qmenuitem </pre> | <p>Calculate total and display the total paid.</p> <p>We will calculate the totals using the TOTAAL numerical variable.</p> | | | | | | | | | | | | | | | | | | | | | | | | | | | | | | | | | | | | |

| SNO | CODING | EXPLANATION |
|-----|---|---|
| | <pre> caption="Open with MS Excel":onclick=openwithexcel end create end create END CREATE SetWindowLong(Form.Handle, -8, 0) SetWindowLong(Application.Handle, -8, Form.Handle) Form.ShowDialog sub openwithexcel totaal=0 for i = 1 to main.rowcount-1 main.cell(0,i)=" " if main.cell(1,i)>" " then main.cell(0,i)=str\$(i) next i blank.clear blank.additems "ID;P" blank.additems "P;PGeneral" blank.additems "P;P_["+chr\$(34)+"R"+chr\$(34)+"* ####,##0.00_] blank.additems "C;Y1;X1;K"+chr\$(34)+"SNO"+chr\$(34) blank.additems "C;Y1;X2;K"+chr\$(34)+"EMPLOYEE NR"+chr\$(34) blank.additems "C;Y1;X3;K"+chr\$(34)+"INI"+chr\$(34) blank.additems "C;Y1;X4;K"+chr\$(34)+"SURNAME"+chr\$(34) blank.additems "C;Y1;X5;K"+chr\$(34)+"PAID"+chr\$(34) for i = 1 to main.rowcount-1 if main.cell(1,i)<" " then for p = 0 to main.colcount-1 if p>4 then blank.additems "C;Y"+str\$(i+1)+";X"+str\$(p+1)+";K"+chr\$(34)+main.cell(p,i)+chr\$(34) end if if p=4 then blank.additems "C;Y"+str\$(i+1)+";X"+str\$(p+1)+";K"+main.cell(p,i) totaal=totaal+val(main.cell(p,i)) blank.additems "F;P1;C5" end if next p end if if main.cell(1,i)=" " then blank.additems "C;Y5;X"+str\$(i+1)+";K"+str\$(totaal) blank.additems "F;P1;C5" exit for end if next i blank.additems "E" blank.savetofile ("c:\ms3\~common\tr04.slk") runme.filerun ("c:\ms3\~common\tr04.slk",1) end sub </pre> | <p>Reset TOTAAL as 0</p> <p>Sum the totals.</p> <p>When the first blank (non legal row) is picked up, then display the value of TOTAAL and format cell as currency.</p> |
| 5 | <pre> \$TYPECHECK ON \$INCLUDE <RapidQ2.inc> \$include <qrun.inc> dim runme as qrun if direxists("c:\ms3")=0 then mkdir "c:\ms3" if direxists("c:\ms3\~common")=0 then mkdir "c:\ms3\~common" dim i as single:dim p as single:dim totaal as double dim blank as qstringlist declare sub openwithexcel CREATE Form AS QFORM Caption = "MS Excel SLK":Width = 640:Height = 480:Center create main as qstringgrid left=10:top=10:width=550:height=280 colcount=5:rowcount=10 cell(0,0)="Sno":colwidths(0)=40 </pre> | <p>Font Colour, Font Size, Shading, Column width</p> |



| SNO | CODING | EXPLANATION |
|-----|---|---|
| | <pre> cell(1,0)="Employee Nr":colwidths(1)=90 cell(2,0)="Ini":colwidths(2)=50 cell(3,0)="Surname":colwidths(3)=250 cell(4,0)="Paid":colwidths(4)=50 cell(1,1)="25484pe":cell(2,1)="A":cell(3,1)="Botha":cell(4,1)="143" cell(1,2)="42343pf":cell(2,2)="M":cell(3,2)="de Lange":cell(4,2)="36.50" cell(1,3)="24138pf":cell(2,3)="SA":cell(3,3)="Swartz":cell(4,3)="252.36" separator=chr\$(240) addoptions(goediting,goalwaysshoweditor,gotabs) end create create gauge as qgauge top=1:left=10:width=610:height=10:forecolor=255 end create create main5 as qmainmenu create menu1 as qmenuitem caption="Open with MS Excel":onclick=openwithexcel end create end create END CREATE SetWindowLong(Form.Handle, -8, 0) SetWindowLong(Application.Handle, -8, Form.Handle) Form.ShowModal sub openwithexcel totaal=0 for i = 1 to main.rowcount-1 main.cell(0,i)=" " if main.cell(1,i)<>" " then main.cell(0,i)=str\$(i) next i blank.clear blank.additems "ID:P" blank.additems "P;PGeneral" blank.additems "P;P_["&chr\$(34)&"R"&chr\$(34)&"* ####,##0.00_] blank.additems "P;ECalibri;M200" blank.additems "P;ECambria;M300;SB;L5" blank.additems "C;Y1;X1;K"&chr\$(34)&"SNO"&chr\$(34) blank.additems "F;PO;FGOC;SLRTBSM1;Y1;X1" blank.additems "C;Y1;X2;K"&chr\$(34)&"EMPLOYEE NR"&chr\$(34) blank.additems "F;PO;FGOC;SLRTBSM1;Y1;X2" blank.additems "C;Y1;X3;K"&chr\$(34)&"INI"&chr\$(34) blank.additems "F;PO;FGOC;SLRTBSM1;Y1;X3" blank.additems "C;Y1;X4;K"&chr\$(34)&"SURNAME"&chr\$(34) blank.additems "F;PO;FGOC;SLRTBSM1;Y1;X4" blank.additems "C;Y1;X5;K"&chr\$(34)&"PAID"&chr\$(34) blank.additems "F;PO;FGOC;SLRTBSM1;Y1;X5" for i = 1 to main.rowcount-1 if main.cell(1,i)<>" " then for p = 0 to main.colcount-1 if p<>4 then blank.additems "C;Y"&str\$(i+1)&"X"&str\$(p+1)&"K"&chr\$(34)&main.cell(p,i)&chr\$(34) if p<>0 then blank.additems "F;PO;FGOL;SLRTBMO;Y"&str\$(i+1)&"X"&str\$(p+1) end if if p=0 then blank.additems "F;PO;FGOC;SLRTBMO;Y"&str\$(i+1)&"X"&str\$(p+1) end if end if if p=4 then blank.additems "C;Y"&str\$(i+1)&"X"&str\$(p+1)&"K"&main.cell(p,i) totaal=totaal+val(main.cell(p,i)) blank.additems "F;PO;FGOR;SLRTBMO;Y"&str\$(i+1)&"X"&str\$(p+1) </pre> | <p>Set font style 0 (default all cells) M=size</p> <p>Set font style 1 M=size; SB is bold on; L= colour GOC (center) SLRTBSM = border on</p> <p>BM1 = font style 1 BSM (shade on)</p> <p>GOL (left) SLRTBSM = border on... BMO Font style default (0)</p> |

| SNO | CODING | EXPLANATION |
|-----|--|---|
| | <pre> blank.additems "F;P1;C5" end if next p end if if main.cell(1,i)="" then blank.additems "C;Y5;X"+str\$(i+1)+";K"+str\$(totaal) blank.additems "F;PO;FGOR;SLRTBMO;Y"+str\$(i+1)+";X"+str\$(p) blank.additems "F;P1;C5" exit for end if next i blank.additems "F;W1 1 5" blank.additems "F;W2 2 20" blank.additems "F;W3 3 10" blank.additems "F;W4 4 40" blank.additems "F;W5 5 20" blank.additems "E" blank.savetofile ("c:\ms3\~common\tr04.slk") runme.filerun ("c:\ms3\~common\tr04.slk",1) end sub </pre> | <p>GOR (right align)</p> <p>Width column 1 Width column 2 ...</p> |

| SNO | EMPLOYEE NR | INI | SURNAME | PAID |
|-----|-------------|-----|----------|----------|
| 1 | 25484pe | A | Botha | R 143,00 |
| 2 | 42343pf | M | de Lange | R 36,50 |
| 3 | 24138pf | SA | Swartz | R 252,36 |
| | | | | R 431,86 |

See [https://en.wikipedia.org/wiki/SYmbolic_LinK_\(SYLK\)](https://en.wikipedia.org/wiki/SYmbolic_LinK_(SYLK)) for more example codes. The abovementioned is only the critical coding that you WILL require drafting a decent MS Excel ® spreadsheet from the FREEQ String Grid.

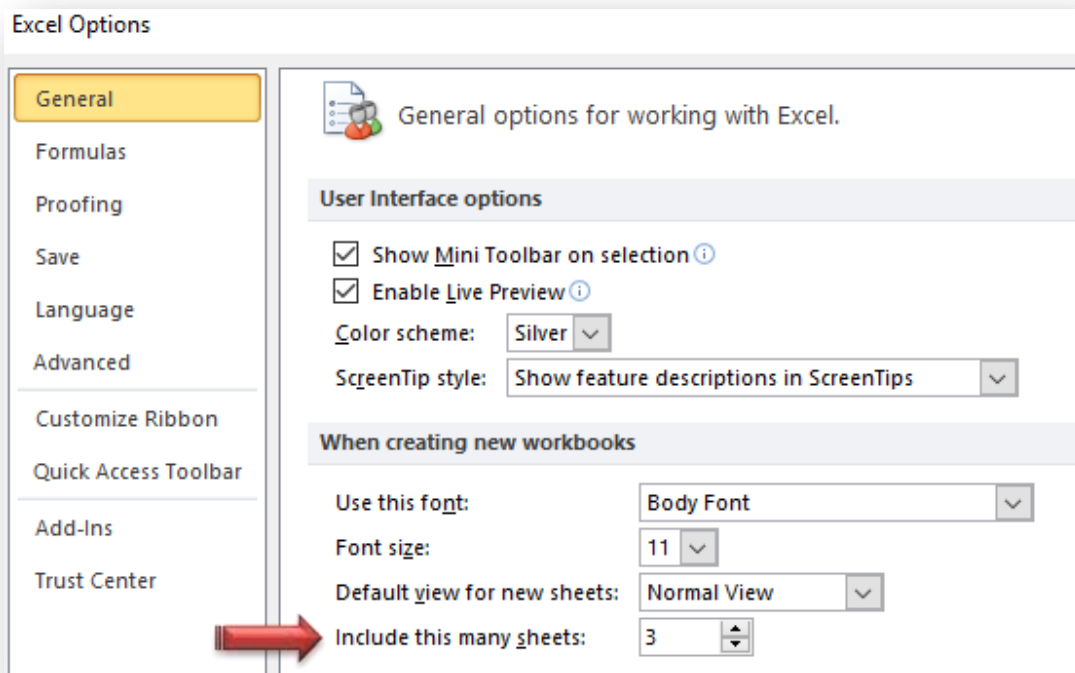
22.7.3 COMAL

Comal is a coding method of transferring data directly from the String Grid into MS Excel ® Live. This is an excellent method however very timeous for large spreadsheets. Also it lacks the ability to add spreadsheets (you need to do it manually prior to starting the process (OPTIONS – TAB TOTAL DEFAULT: 3 = alter to total required) – the alternative is to create multiple MS Excel documents (XLS).

The **other disadvantage** of COMAL is that you can only call MS Excel ® once within the program to create a MS Excel ® spreadsheet. There is a **COMAL.DLL** file that needs to be distributed with your EXE file. You therefore are required to create a sub-program and load the stored spreadsheet from the main program. Transfer the information to MS Excel ® and then exit to refresh the memory and MS Excel ® program.

We will prepare a FreeQ Spreadsheet and then transfer it to MS Excel with the following abilities:

- Cell information.
- Cell calculations.
- Cell format (fonts)
- Cell format (colour & border style & merging).
- Select next MS Excel ® sheet and write on it (by default MS Excel 2003, 2007 & 2010 has only 3 sheets available, MS Excel 2016 only has by default 1 sheet available – **Comal is not able to add more** – to avoid this ensure to inform the user to add by default):
 - Select **FILE**
 - Select **OPTIONS**
 - Enter amount of default sheets as required and restart MS Excel ®.



| SNO | CODING | EXPLANATION |
|-----|--|--|
| 1 | <pre> \$TYPECHECK ON \$INCLUDE "RapidQ2.inc" \$include "QSHFileOperation.inc" \$INCLUDE "XP_Manifest.inc" \$include "qskin.inc" \$XP_MANIFEST \$INCLUDE "comal.inc" DIM xlrtn AS BYTE DIM vle AS DOUBLE DIM rtn AS INTEGER DIM stg\$ AS STRING xlrtn=FALSE if direxists("c:\ms3")=0 then mkdir "c:\ms3" if direxists("c:\ms3\~common")=0 then mkdir "c:\ms3\~common" dim i as single:dim p as single:dim totaal as double dim blank as qstringlist declare sub openwithexcel declare sub CleanUp_Word CREATE Form AS QFORM Caption = "MS Excel Comal":Width = 640:Height = 480:Center onclose=CleanUp_Word create main as qstringgrid left=10:top=10:width=550:height=280 colcount=5:rowcount=10 cell(0,0)="Sno":colwidths(0)=40 cell(1,0)="Employee Nr":colwidths(1)=90 cell(2,0)="Ini":colwidths(2)=50 cell(3,0)="Surname":colwidths(3)=250 cell(4,0)="Paid":colwidths(4)=50 cell(1,1)="25484pe":cell(2,1)="A":cell(3,1)="Botha":cell(4,1)="143" cell(1,2)="42343pf":cell(2,2)="M":cell(3,2)="de Lange":cell(4,2)="36.50" cell(1,3)="24138pf":cell(2,3)="SA":cell(3,3)="Swartz":cell(4,3)="252.36" separator=chr\$(240) adoptions(goediting,goalwaysshoweditor,gotabs) end create create gauge as qgauge top=1:left=10:width=610:height=10:forecolor=255 end create create main5 as qmainmenu create menu1 as qmenuitem caption="Open with MS Excel":onclick=openwithexcel end create end create END CREATE SetWindowLong(Form.Handle, -8, 0) SetWindowLong(Application.Handle, -8, Form.Handle) Form.ShowModal sub openwithexcel end sub SUB CleanUp_Word IF xlrtn=TRUE THEN XDOCUMENT_Close xlrtn=FALSE END IF END SUB </pre> | <p>Activating Comal. All these include and DIM functions are required to process the COMAL element.</p> <p>Clear memory when closing the program. The string grid with information that will be used to transfer to MS Excel @</p> <p>Sub program where transfer will occur.</p> <p>Clearing the computer's memory and close the program.</p> |



| SNO | CODING | EXPLANATION |
|-----|--|--|
| 2 | <pre> \$TYPECHECK ON \$INCLUDE "RapidQ2.inc" #include "QSHFileOperation.inc" \$INCLUDE "XP_Manifest.inc" #include "qskin.inc" \$XP_MANIFEST \$INCLUDE "comal.inc" DIM xlrtn AS BYTE:DIM vle AS DOUBLE:DIM rtn AS INTEGER DIM stg\$ AS STRING:xlrtn=FALSE if direxists("c:\ms3")=0 then mkdir "c:\ms3" if direxists("c:\ms3\~common")=0 then mkdir "c:\ms3\~common" dim i as single:dim p as single:dim totaal as double dim blank as qstringlist declare sub openwithexcel declare sub CleanUp_Word CREATE Form AS QFORM Caption = "MS Excel Comal":Width = 640:Height = 480:Center onclose=CleanUp_Word create main as qstringgrid left=10:top=10:width=550:height=280:colcount=5:rowcount=10 cell(0,0)="Sno":colwidths(0)=40:cell(1,0)="Employee Nr":colwidths(1)=90 cell(2,0)="Ini":colwidths(2)=50:cell(3,0)="Surname":colwidths(3)=250 cell(4,0)="Paid":colwidths(4)=50 cell(1,1)="25484pe":cell(2,1)="A":cell(3,1)="Botha":cell(4,1)="143" cell(1,2)="42343pf":cell(2,2)="M":cell(3,2)="de Lange":cell(4,2)="36.50" cell(1,3)="24138pf":cell(2,3)="SA":cell(3,3)="Swartz":cell(4,3)="252.36" separator=chr\$(240):addoptions(goediting,goalwaysshoweditor,gotabs) end create create gauge as qgauge top=1:left=10:width=610:height=10:forecolor=255 end create create main5 as qmainmenu create menu1 as qmenuitem caption="Open with MS Excel":onclick=openwithexcel end create end create END CREATE SetWindowLong(Form.Handle, -8, 0) SetWindowLong(Application.Handle, -8, Form.Handle) Form.ShowModal sub openwithexcel xlrtn=XDOCUMENT_Open if xlrtn=TRUE THEN EXCEL_FullScreen[NO] XSHEET_SetName("HR Personnel") rtn=XSHEET_GetName stg\$=VarPtr\$(rtn) form.caption="Excel Sheet Name: "+stg\$ XCELL_MergeCells("A1:E1") XCELL_WriteText(1,1,"HR NAMELIST") XCELL_WriteText(2,1,mid\$(date\$,4,2)+"-"+left\$(date\$,2)+"-"+right\$(date\$,4)) for i = 0 to main.rowcount-1 for p = 0 to main.colcount-1 XCELL_WriteText(i+4,p+1,main.cell(p,i)) next p next i END IF end sub </pre> | <p>Open MS Excel If open then ... Only sheet (not full interface). Name the first sheet HR PERSONNEL and open it for editing. The value of the sheet name is stored within STG\$. Merge cells [column range] from A1:E1. Add text to Y1,X1. Add date to Y2,X1 (remember Excel works rows/cols and starts at 1/1. Loop the FreeQ register and write it to the coordinate [+4 rows down and +1 column.</p> |

| SNO | CODING | EXPLANATION |
|-----|---|--|
| | <pre> SUB CleanUp_Word IF xlrtn=TRUE THEN XDOCUMENT_Close xlrtn=FALSE END IF END SUB </pre> | |
| 3 | <pre> \$TYPECHECK ON \$INCLUDE "RapidQ2.inc" #include "QSHFileOperation.inc" \$INCLUDE "XP_Manifest.inc" #include "qskin.inc" \$XP_MANIFEST \$INCLUDE "comal.inc" DIM xlrtn AS BYTE:DIM vle AS DOUBLE:DIM rtn AS INTEGER DIM stg\$ AS STRING:xlrtn=FALSE if direxists("c:\ms3")=0 then mkdir "c:\ms3" if direxists("c:\ms3\~common")=0 then mkdir "c:\ms3\~common" dim i as single:dim p as single:dim totaal as double:dim x as single dim blank as qstringlist declare sub openwithexcel declare sub CleanUp_Word CREATE Form AS QFORM Caption = "MS Excel Comal":Width = 640:Height = 480:Center onclose=CleanUp_Word create main as qstringgrid left=10:top=10:width=550:height=280:colcount=5:rowcount=10 cell(0,0)="Sno":colwidths(0)=40:cell(1,0)="Employee Nr":colwidths(1)=90 cell(2,0)="Ini":colwidths(2)=50:cell(3,0)="Surname":colwidths(3)=250 cell(4,0)="Paid":colwidths(4)=50 cell(1,1)="25484pe":cell(2,1)="A":cell(3,1)="Botha":cell(4,1)="143" cell(1,2)="42343pf":cell(2,2)="M":cell(3,2)="de Lange":cell(4,2)="36.50" cell(1,3)="24138pf":cell(2,3)="SA":cell(3,3)="Swartz":cell(4,3)="252.36" separator=chr\$(240):adoptions(goediting,goalwaysshoweditor,gotabs) end create create gauge as qgauge top=1:left=10:width=610:height=10:forecolor=255 end create create main5 as qmainmenu create menu1 as qmenuitem caption="Open with MS Excel":onclick=openwithexcel end create end create END CREATE SetWindowLong(Form.Handle, -8, 0) SetWindowLong(Application.Handle, -8, Form.Handle) Form.ShowModal sub openwithexcel xlrtn=XDOCUMENT_Open if xlrtn=TRUE THEN EXCEL_FullScreen(NO) XSHEET_SetName("HR Personnel") rtn=XSHEET_GetName stg\$=VarPtr\$(rtn) form.caption="Excel Sheet Name: "+stg\$ XCELL_MergeCells("A1:E1") XCELL_WriteText(1,1,"HR NAMELIST") XCELL_WriteText(2,1,mid\$(date\$,4,2)+"-"+left\$(date\$,2)+"-"+right\$(date\$,4)) x=0 for i = 0 to main.rowcount-1 </pre> | <p>Will be used to record last active row within the FreeQ String Grid (last entry).</p> <p>Reset last entry position.</p> |



| SNO | CODING | EXPLANATION |
|-----|--|---|
| | <pre> if main.cell(1,i)="" then if x=0 then x=i end if for p = 0 to main.colcount-1 XCELL_WriteText(i+4,p+1,main.cell(p,i)) next p next i XCELL_SetColour("A4:E4",5151386) XCELL_SetBorderColour("A4:E4",0) XCELL_SetBorderThickness("A4:E4",4) XCELL_SetBorderStyle("A5:E"+str\$(5+x),1) END IF end sub SUB CleanUp_Word IF xlrtn=TRUE THEN XDOCUMENT_Close xlrtn=FALSE END IF END SUB </pre> | <p>Determine last entry row on QStringGrid</p> <p>Set cell colours. Set cell border color. Set cell thickness (1-4) Set cell borderstyle (1-13)</p> |

| | A | B | C | D | E | F |
|----|-------------|-----------------|------------|----------------|-------------|---|
| 1 | HR NAMELIST | | | | | |
| 2 | 16-06-2018 | | | | | |
| 3 | | | | | | |
| 4 | Sno | Employee | Ini | Surname | Paid | |
| 5 | | 25484pe | A | Botha | 143 | |
| 6 | | 42343pf | M | de Lange | 36,5 | |
| 7 | | 24138pf | SA | Swartz | 252,36 | |
| 8 | | | | | | |
| 9 | | | | | | |
| 10 | | | | | | |

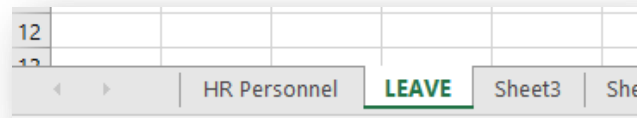
| SNO | CODING | EXPLANATION |
|-----|---|-------------|
| 4 | <pre> \$TYPECHECK ON \$INCLUDE "RapidQ2.inc" #include "QSHFileOperation.inc" \$INCLUDE "XP_Manifest.inc" #include "qskin.inc" \$XP_MANIFEST \$INCLUDE "comal.inc" DIM xlrtn AS BYTE:DIM vle AS DOUBLE:DIM rtn AS INTEGER DIM stg\$ AS STRING:xlrtn=FALSE if direxists("c:\ms3")=0 then mkdir "c:\ms3" if direxists("c:\ms3\~common")=0 then mkdir "c:\ms3\~common" dim i as single:dim p as single:dim totaal as double dim x as single dim blank as qstringlist declare sub openwithexcel declare sub CleanUp_Word CREATE Form AS QFORM Caption = "MS Excel Comal":Width = 640:Height = 480:Center onclose=CleanUp_Word create main as qstringgrid </pre> | |

| SNO | CODING | EXPLANATION |
|-----|--|---|
| | <pre> left=10:top=10:width=550:height=280:colcount=5:rowcount=10 cell(0,0)="Sno":colwidths(0)=40:cell(1,0)="Employee Nr":colwidths(1)=90 cell(2,0)="Ini":colwidths(2)=50:cell(3,0)="Surname":colwidths(3)=250 cell(4,0)="Paid":colwidths(4)=50 cell(1,1)="25484pe":cell(2,1)="A":cell(3,1)="Botha":cell(4,1)="143" cell(1,2)="42343pf":cell(2,2)="M":cell(3,2)="de Lange":cell(4,2)="36.50" cell(1,3)="24138pf":cell(2,3)="SA":cell(3,3)="Swartz":cell(4,3)="252.36" separator=chr\$(240):adoptions(goediting,goalwaysshoweditor,gotabs) end create create gauge as qgauge top=1:left=10:width=610:height=10:forecolor=255 end create create main5 as qmainmenu create menu1 as qmenuitem caption="Open with MS Excel":onclick=openwithexcel end create end create END CREATE SetWindowLong(Form.Handle, -8, 0) SetWindowLong(Application.Handle, -8, Form.Handle) Form.ShowModal sub openwithexcel xlrtn=XDOCUMENT_Open if xlrtn=TRUE THEN EXCEL_FullScreen(NO) XSHEET_SetName("HR Personnel") rtn=XSHEET_GetName stg\$=VarPtr\$(rtn) form.caption="Excel Sheet Name: "+stg\$ XCELL_MergeCells("A1:E1") XCELL_WriteText(1,1,"HR NAMELIST") XCELL_WriteText(2,1,mid\$(date\$,4,2)+"-"+left\$(date\$,2)+"-"+right\$(date\$,4)) x=0 for i = 0 to main.rowcount-1 if main.cell(1,i)="" then if x=0 then x=i end if for p = 0 to main.colcount-1 XCELL_WriteText(i+4,p+1,main.cell(p,i)) next p next i XCELL_SetColour("A4:E4",5151386):XCELL_SetBorderColour("A4:E4",0) XCELL_SetBorderThickness("A4:E4",4):XCELL_SetBorderStyle("A5:E"+str\$(5+x),1) XCELL_SetColumnWidth("A:A",5):XCELL_SetColumnWidth("B:B",10) XCELL_SetColumnWidth("C:C",8):XCELL_SetColumnWidth("D:D",20) XCELL_SetColumnWidth("E:E",10) XCELL_SetPattern("A2:B2",1) END IF end sub SUB CleanUp_Word IF xlrtn=TRUE THEN XDOCUMENT_Close xlrtn=FALSE END IF END SUB </pre> | <p>Set each column's width.</p> <p>Set pattern on cells; A2 and B2 (0-18)</p> |

| SNO | CODING | EXPLANATION |
|-----|---|--------------------------------------|
| 5 | <pre> \$TYPECHECK ON \$INCLUDE "RapidQ2.inc" #include "QSHFileOperation.inc" \$INCLUDE "XP_Manifest.inc" #include "qskin.inc" \$XP_MANIFEST \$INCLUDE "comal.inc" DIM xlrtn AS BYTE:DIM vle AS DOUBLE:DIM rtn AS INTEGER DIM stg\$ AS STRING:xlrtn=FALSE if direxists["c:\ms3"]=0 then mkdir "c:\ms3" if direxists["c:\ms3\~common"]=0 then mkdir "c:\ms3\~common" dim i as single:dim p as single:dim totaal as double dim x as single dim blank as qstringlist declare sub openwithexcel declare sub CleanUp_Word CREATE Form AS QFORM Caption = "MS Excel Comal":Width = 640:Height = 480:Center onclose=CleanUp_Word create main as qstringgrid left=10:top=10:width=550:height=280:colcount=5:rowcount=10 cell(0,0)="Sno":colwidths(0)=40:cell(1,0)="Employee Nr":colwidths(1)=90 cell(2,0)="Ini":colwidths(2)=50:cell(3,0)="Surname":colwidths(3)=250 cell(4,0)="Paid":colwidths(4)=50 cell(1,1)="25484pe":cell(2,1)="A":cell(3,1)="Botha":cell(4,1)="143" cell(1,2)="42343pf":cell(2,2)="M":cell(3,2)="de Lange":cell(4,2)="36.50" cell(1,3)="24138pf":cell(2,3)="SA":cell(3,3)="Swartz":cell(4,3)="252.36" separator=chr\$(240):adoptions(goediting,goalwaysshoweditor,gotabs) end create create gauge as qgauge top=1:left=10:width=610:height=10:forecolor=255 end create create main5 as qmainmenu create menu1 as qmenuitem caption="Open with MS Excel":onclick=openwithexcel end create end create END CREATE SetWindowLong(Form.Handle, -8, 0) SetWindowLong(Application.Handle, -8, Form.Handle) Form.ShowModal sub openwithexcel xlrtn=XDOCUMENT_Open if xlrtn=TRUE THEN EXCEL_FullScreen(NO) XSHEET_SetName("HR Personnel") rtn=XSHEET_GetName stg\$=VarPtr\$(rtn) form.caption="Excel Sheet Name: "+stg\$ XCELL_MergeCells("A1:E1") XCELL_WriteText(1,1,"HR NAMELIST") XCELL_WriteText(2,1,mid\$(date\$,4,2)+"-"+left\$(date\$,2)+"-"+right\$(date\$,4)) x=0 for i = 0 to main.rowcount-1 if main.cell(1,i)="" then if x=0 then x=i end if for p = 0 to main.colcount-1 XCELL_WriteText(i+4,p+1,main.cell(p,i)) </pre> | <p>Call and name next TAB sheet.</p> |



| SNO | CODING | EXPLANATION |
|-----|--|--|
| | <pre> next p next i XCELL_SetColour("A4:E4",5151386):XCELL_SetBorderColour("A4:E4",0) XCELL_SetBorderThickness("A4:E4",4):XCELL_SetBorderStyle("A5:E"+str\$(5+x),1) XCELL_SetColumnWidth("A:A",5):XCELL_SetColumnWidth("B:B",10) XCELL_SetColumnWidth("C:C",8):XCELL_SetColumnWidth("D:D",20) XCELL_SetColumnWidth("E:E",10):XCELL_SetPattern("A2:B2",1) XSHEET_ActivateByNumber(2) XSHEET_SetName("LEAVE") XCELL_MergeCells("A1:E1") XCELL_WriteText(1,1,"LEAVE PLAN") END IF end sub SUB CleanUp_Word IF xlrtn=TRUE THEN XDOCUMENT_Close xlrtn=FALSE END IF END SUB </pre> | <p>Call sheet 2. Name sheet 2 LEAVE. (Remember they must already be active within the default of MS Excel ®)</p> |



TO alter the font of a cell or area:

XCELL_SetFontSize("D3:E7",30)

| SNO | CODING | EXPLANATION |
|-----|--|--|
| 1 | <pre> \$TYPECHECK ON \$INCLUDE "RapidQ2.inc" #include "QSHFileOperation.inc" \$INCLUDE "XP_Manifest.inc" #include "qskin.inc" \$XP_MANIFEST \$INCLUDE "comal.inc" DIM xlrtn AS BYTE:DIM vle AS DOUBLE:DIM rtn AS INTEGER DIM stg\$ AS STRING:xlrtn=FALSE if direxists("c:\ms3")=0 then mkdir "c:\ms3" if direxists("c:\ms3\~common")=0 then mkdir "c:\ms3\~common" dim i as single:dim p as single:dim totaal as double dim x as single dim blank as qstringlist declare sub openwithexcel declare sub CleanUp_Word CREATE Form AS QFORM Caption = "MS Excel Comal":Width = 640:Height = 480:Center onclose=CleanUp_Word create main as qstringgrid left=10:top=10:width=550:height=280:colcount=5:rowcount=10 cell(0,0)="Sno":colwidths(0)=40:cell(1,0)="Employee Nr":colwidths(1)=90 cell(2,0)="Ini":colwidths(2)=50:cell(3,0)="Surname":colwidths(3)=250 cell(4,0)="Paid":colwidths(4)=50 </pre> | <p>Alterating sheets and printing the current active sheet.</p> |

| SNO | CODING | EXPLANATION |
|-----|--|--|
| | <pre> cell[1,1]="25484pe":cell[2,1]="A":cell[3,1]="Botha":cell[4,1]="143" cell[1,2]="42343pf":cell[2,2]="M":cell[3,2]="de Lange":cell[4,2]="36.50" cell[1,3]="24138pf":cell[2,3]="SA":cell[3,3]="Swartz":cell[4,3]="252.36" separator=chr\$(240):addoptions(goediting,goalwaysshoweditor,gotabs) end create create gauge as qgauge top=1:left=10:width=610:height=10:forecolor=255 end create create main5 as qmainmenu create menu1 as qmenuitem caption="Open with MS Excel":onclick=openwithexcel end create end create END CREATE SetWindowLong(Form.Handle, -8, 0) SetWindowLong(Application.Handle, -8, Form.Handle) Form.ShowDialog sub openwithexcel xlrtm=XDOCUMENT_Open if xlrtm=TRUE THEN EXCEL_FullScreen(NO) XSHEET_SetName("HR Personnel") rtn=XSHEET_GetName stg\$=VarPtr\$(rtn) form.caption="Excel Sheet Name: "+stg\$ XCELL_MergeCells("A1:E1") XCELL_WriteText(1,1,"HR NAMELIST") XCELL_WriteText(2,1,mid\$(date\$,4,2)+"-"+left\$(date\$,2)+"-"+right\$(date\$,4)) x=0 for i = 0 to main.rowcount-1 if main.cell(1,i)="" then if x=0 then x=i end if for p = 0 to main.colcount-1 XCELL_WriteText(i+4,p+1,main.cell(p,i)) next p next i XCELL_SetColour("A4:E4",5151386):XCELL_SetBorderColour("A4:E4",0) XCELL_SetBorderThickness("A4:E4",4):XCELL_SetBorderStyle("A5:E"+str\$(5+x),1) XCELL_SetColumnWidth("A:A",5):XCELL_SetColumnWidth("B:B",10) XCELL_SetColumnWidth("C:C",8):XCELL_SetColumnWidth("D:D",20) XCELL_SetColumnWidth("E:E",10):XCELL_SetPattern("A2:B2",1) XSHEET_ActivateByNumber(2) XSHEET_SetName("LEAVE") XCELL_MergeCells("A1:E1") XCELL_WriteText(1,1,"LEAVE PLAN") XSHEET_ActivateByNumber(1) XSHEET_PrintActiveSheet END IF end sub SUB CleanUp_Word IF xlrtm=TRUE THEN XDOCUMENT_Close xlrtm=FALSE END IF END SUB </pre> | <p>Remember to set your default printer settings (landscape, etc)</p> <p>Change to sheet 1. Print the current active sheet.</p> <p>To print all sheets: EXCEL_PrintAll(1,NO,"",NO,YES,"")</p> <p>To print to a file: EXCEL_PrintAll(1,NO,"",YES,YES,"C:\Test.prn")</p> |