

## MODULE 11.1: FONTS

---

**Subject Outcome 1: Introduction: QFONT & QFONTDIALOG**

**Subject Outcome 2: Installing new fonts**

**Subject Outcome 3: QFont**

**Subject Outcome 4: QFontDialog**



## 11.1 FONTS

### 11.1.1 INTRO QFONT & QFONTDIALOG

These abovementioned components are used to **select the desired font type, size, style (bold, italic, underlined) and color.**



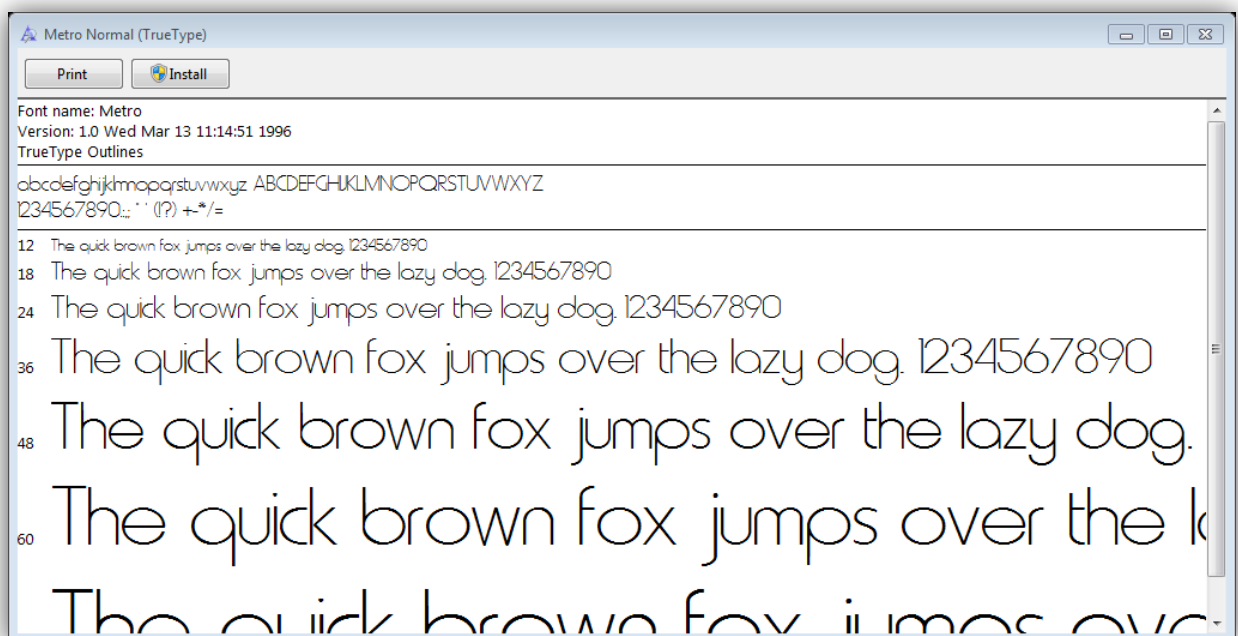
The **difference** between the 2 components are that with **QFONT** you must code all the particulars regarding the **FONT** while with **QFONTDIALOG** a dialog box containing all the particulars regarding all the installed font types are displayed from which the user may **select** the desired font.

### 11.1.2 Installing new fonts

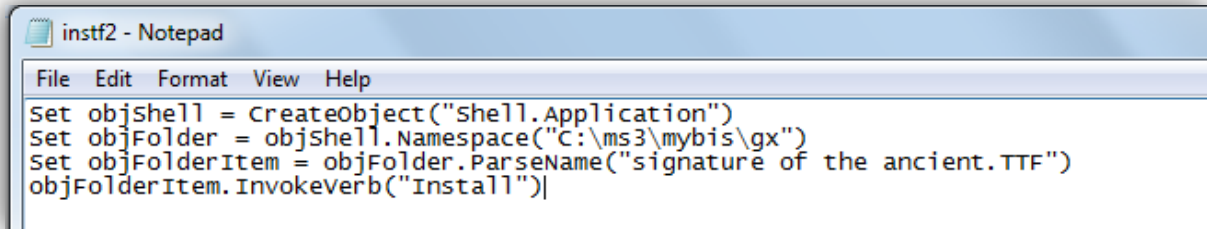
You need to obtain the new font (from [font download site](#)s or copy directly from somebody's computer). All fonts are found at location; **C:\Windows\Fonts** ... [open folder by clicking here.](#)

**There are three methods of installing fonts:**

- **Copy & Paste** the new font into the C:\WINDOWS\FONTS folder directly.
- **Open the FONT** (double click on it) and click on the **INSTALL** button.



- Coding your program to auto install fonts. You will be coding two programs.
  - The first program you will be coding using **NOTEPAD** (type the script and **save** file as **INSTF2.VBS** within your program folder – for each font you wish to install, you need to create a new **.VBS** file INSTF3.VBS, INSTF4.VBS, etc.)



```
instf2 - Notepad
File Edit Format View Help
Set objShell = CreateObject("shell.Application")
Set objFolder = objShell.Namespace("C:\ms3\mybis\gx")
Set objFolderItem = objFolder.ParseName("signature of the ancient.TTF")
objFolderItem.InvokeVerb("Install")
```

Figure 1: The coding on NOTEPAD

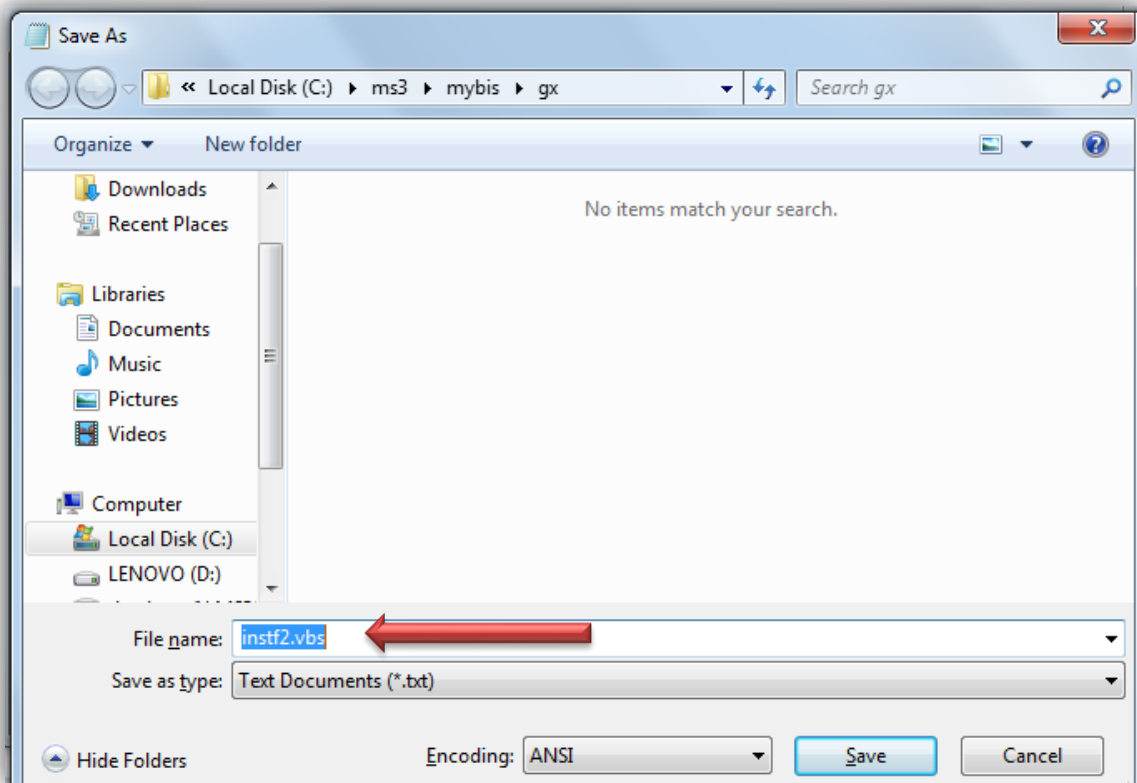
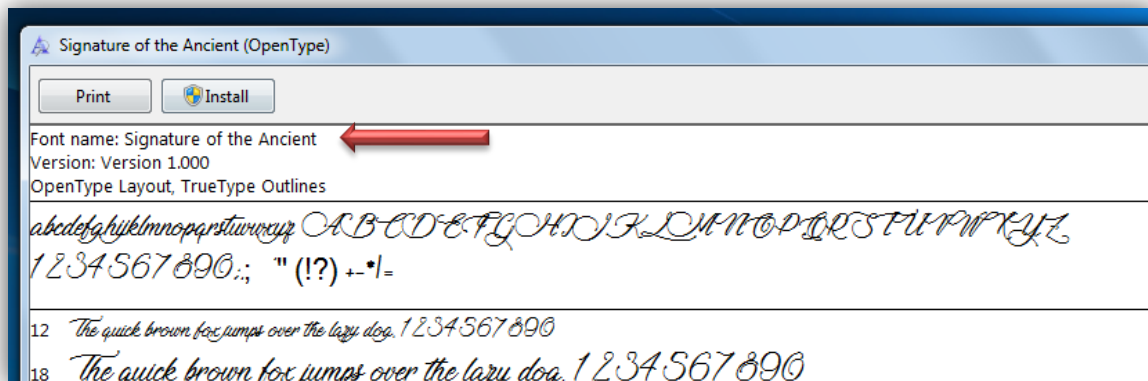


Figure 2: Save as a VBS file.

**The actual coding of the SCRIPT:**

<pre>Set objShell = CreateObject("Shell.Application") Set objFolder = objShell.Namespace("C:\ms3\mybis\gx")  Set objFolderItem = objFolder.ParseName("signature of the ancient.TTF") objFolderItem.InvokeVerb("Install")</pre>	<p>Create program. Indicate the location of the <b>FONT</b>. The name of the font. Install the font.</p>
--	--

To confirm the correct name of the font, open the font and confirm the name as is (the actual font file must be saved at the location as indicated by the SCRIPT (c:\ms3\mybis\gx))



- o The second program you will be coding using **FREEQ** (enter the program and run it by pressing **F5**):

<pre>\$TYPECHECK ON \$INCLUDE &lt;RapidQ2.inc&gt;  Declare Function WinExec Lib "kernel32" Alias "WinExec" (ByVal lpCmdLine As String, ByVal nCmdShow As Long) As Long  if fileexists("c:\windows\fonts\Signature of the Ancient.ttf")=0 then     WinExec "Explorer.exe c:\ms3\mybis\gx\instf2.vbs", 10 end if  CREATE Form AS QFORM     Caption = "FONTS":Width = 640:height = 480     Center END CREATE SetWindowLong(Form.Handle, -8, 0) SetWindowLong(Application.Handle, -8, Form.Handle) Form.ShowModal</pre>	<p>Activate the <b>CMD</b> prompt function.</p> <p>If the font has not been installed, then run the <b>VBS</b> script called <b>INSTF2.VBS</b> that will install the font <b>SIGNATURE OF THE ANCIENT.TTF</b></p> <p>Ensure that the script has been saved as indicated (address location). You need to do this for every <b>FONT</b> that you wish to install. Confirm if the font has been installed, then create a <b>SCRIPT</b> file for each file ... the next <b>SCRIPT</b> could be <b>INSTF3.VBS</b>; then <b>INSTF4.VBS</b>, etc.</p>
---	--

You will code your **FREEQ** program to confirm if the font is visible in the Window's Font directory. If the font is not visible (installed), then run the VBS program by installing the stipulated font.



**To install more fonts:**

Type the following script using **NOTEPAD** and save it as **INSTF3.VBS** (you now have **two VBS** files within your active directory):

<pre>Set objShell = CreateObject("Shell.Application") Set objFolder = objShell.Namespace("C:\ms3\mybis\gx")  Set objFolderItem = objFolder.ParseName("metro.TTF") objFolderItem.InvokeVerb("Install")</pre>	<p>Create program. Indicate the location of the <b>FONT</b>. The <b>name</b> of the font. <b>Install</b> the font.</p>
---	--

Update the following with **FREEQ** and run the program **F5**):

<pre>\$TYPECHECK ON \$INCLUDE &lt;RapidQ2.inc&gt;  Declare Function WinExec Lib "kernel32" Alias "WinExec" (ByVal lpCmdLine As String, ByVal nCmdShow As Long) As Long  if fileexists("c:\windows\fonts\Signature of the Ancient.ttf")=0 then     WinExec "Explorer.exe c:\ms3\mybis\gx\instf2.vbs", 10 end if  if fileexists("c:\windows\fonts\metro normal.ttf")=0 then     WinExec "Explorer.exe c:\ms3\mybis\gx\instf3.vbs", 10 end if  CREATE Form AS QFORM     Caption = "FONTS":Width = 640:height = 480     Center END CREATE SetWindowLong(Form.Handle, -8, 0) SetWindowLong(Application.Handle, -8, Form.Handle) Form.ShowModal</pre>	<p>As seen you need to confirm and install each font as an individual item, by calling the <b>VBS</b> file for that font.</p>
---	---

### 11.1.3 QFONT

To **change the font settings** for any element (**qlabel**, **qbutton**, **qstringgrid**, **qlistbox**, etc) you need to assign the font to that element. To do this you use the **QFONT** function. **Firstly** you will **assign and establish the font** and its **properties**, then you will assign that font to the element as required.

**Syntax (with no parameters):**

Commands	Description
Dim ? as QFONT	? Represents the name given for the font.



Property Settings:

Sno	Property	Description
1	<pre>\$TYPECHECK ON \$INCLUDE &lt;RapidQ2.inc&gt; dim font1 as qfont CREATE Form AS QFORM     Caption = "FONTS":Width = 640:height = 480:Center END CREATE SetWindowLong(Form.Handle, -8, 0) SetWindowLong(Application.Handle, -8, Form.Handle) Form.ShowModal</pre>	<p>Establish the font as name the established font as <b>FONT1</b>.</p>
2	<pre>\$TYPECHECK ON \$INCLUDE &lt;RapidQ2.inc&gt;  dim font1 as qfont font1.name="AR BLANCA" font1.color=255 font1.size=25  CREATE Form AS QFORM     Caption = "FONTS":Width = 640:height = 480:Center     create label1 as qlabel         left=50:top=50:caption="Test the Font ... The brown Fox ..."         font=font1     end create END CREATE SetWindowLong(Form.Handle, -8, 0) SetWindowLong(Application.Handle, -8, Form.Handle) Form.ShowModal</pre>	<p>Assign the font AR BLANCA to FONT1. Assign the color (red=255) to FONT1. Set the size of the text as 25 pixels high.</p> <p>Create a QLABEL to which the font will be assigned with. Position and caption. Assign FONT1 to this element.</p>
3	<pre>\$TYPECHECK ON \$INCLUDE &lt;RapidQ2.inc&gt;  dim font1 as qfont font1.name="AR BLANCA" font1.color=255 font1.size=25 font1.addstyles(fsbold,fsitalic,fsunderline)  CREATE Form AS QFORM     Caption = "FONTS":Width = 640:height = 480:Center     create label1 as qlabel         left=50:top=50:caption="Test the Font ... The brown Fox ..."         font=font1     end create END CREATE SetWindowLong(Form.Handle, -8, 0) SetWindowLong(Application.Handle, -8, Form.Handle) Form.ShowModal</pre>	<p>Add the following <b>styles</b>:</p> <ul style="list-style-type: none"> <li>• FSBOLD – <b>bold</b></li> <li>• FSITALIC – <b>italic</b></li> <li>• FSUNDERLINE - <b>underline</b></li> </ul>





Sno	Property	Description
4	<pre> \$TYPECHECK ON \$INCLUDE &lt;RapidQ2.inc&gt; dim font1 as qfont font1.name="AR BLANCA":font1.color=255:font1.size=25 font1.addstyles(fsbold,fsitalic,fsunderline) dim font2 as qfont font2.name="Bauhaus 93":font2.color=16731983:font2.size=20 font2.addstyles(fsbold,fsunderline) CREATE Form AS QFORM Caption = "FONTS":Width = 640:height = 480:Center create label1 as qlabel left=50:top=50:caption="Test the Font ... The brown Fox ..." font=font1 end create create label2 as qlabel left=50:top=150:caption="The brown fox Jumps ...": font=font2 end create create label3 as qlabel left=50:top=250:caption="The brown fox Jumps ...": font=font2 end create END CREATE SetWindowLong(Form.Handle, -8, 0) SetWindowLong(Application.Handle, -8, Form.Handle) Form.ShowModal </pre>	<p><b>Adding more font types to other elements.</b></p> <p>Create FONT2 font. Assign the properties to FONT2.</p> <p>Add LABEL2 Qlabel.</p> <p>Assign FONT2 to the LABEL2 element. Add LABEL3 Qlabel.</p> <p>Assign FONT2 to the LABEL3 element.</p>
5	<pre> \$TYPECHECK ON \$INCLUDE &lt;RapidQ2.inc&gt; dim font1 as qfont font1.name="AR BLANCA":font1.color=255:font1.size=25 font1.addstyles(fsbold,fsitalic,fsunderline) dim font2 as qfont font2.name="Bauhaus 93":font2.color=16731983:font2.size=20 font2.addstyles(fsbold,fsunderline) CREATE Form AS QFORM Caption = "FONTS":Width = 640:height = 480:Center create label1 as qlabel left=50:top=50:caption="Test the Font ... The brown Fox ..." font=font1 end create create label2 as qlabel left=50:top=150:caption="The brown fox Jumps ...": font=font2 end create create label3 as qlabel left=50:top=250:caption="The brown fox Jumps ...": font=font2 end create END CREATE SetWindowLong(Form.Handle, -8, 0) SetWindowLong(Application.Handle, -8, Form.Handle) font2.color=65280:font2.size=50:label3.font=font2 Form.ShowModal </pre>	<p><b>Altering font settings after the settings were done within the establishment (DIM) area.</b></p> <p><b>Alter the font properties</b> of FONT2 to be green, 50 pixels in height. <b>Remember</b> that these <b>altered settings</b> will not be the new fixed settings. It will not alter the already established elements, only the elements that is actually assigned to after the alterations.</p>



Sno	Property	Description
6	?DelStyles(fsbold,fsitalic,fsunderline)	This command will remove styles from the indicated font element (? = font2)

### List of installed fonts:

We will now list the fonts that are installed on YOUR computer.

<pre> \$TYPECHECK ON \$INCLUDE &lt;RapidQ2.inc&gt; dim i as single dim font as qfont;font.size=25 declare sub alterfont CREATE Form AS QFORM   Caption = "FONTS":Width = 640:height = 480:Center   create fontlist as qcombobox     left=50:top=5:width=450:style=3:dropdowncount=20     onchange=alterfont   end create   create label1 as qlabel     left=5:top=370:caption="The Brown Fox jumped 123"     font=font   end create END CREATE SetWindowLong(Form.Handle, -8, 0) SetWindowLong(Application.Handle, -8, Form.Handle)  for i = 0 to font.fontcount-1   fontlist.additems font.fontname[i] next i  Form.ShowModal  sub alterfont   font.name=fontlist.item(fontlist.itemindex)   label1.font=font end sub </pre>	<p><b>Required numerical</b> variable for looping. Establish and name the <b>FONT</b> element. Establish the <b>sub program</b></p> <p>The <b>COMBOBOX</b> that will contain all installed fonts.</p> <p>If the <b>selected font is changed</b>, then call the sub program that will display the appearance of the font.</p> <p>Create the <b>QLABEL</b> that will display some text to illustrate the selected font.</p> <p>Add the font list (FONT.FONTCOUNT-1) to the combobox (font names are held by method setting FONTNAME{?}).</p> <p>The sub program that will be called to alter the selected font. Assign the selected font to the FONT element and refresh the LABEL1 font setting with the selected font.</p>
---	--

### 11.1.4 QFONTDIALOG

This is a pre-programmed dialog box with FONT properties and methods. The dialog box may be pre-programmed to set the default settings of the program. The purpose of this component is to give the user access and ability to alter the FONT properties and methods to be used in the program (such as a word editor, etc.)

#### Syntax (with no parameters):

Commands	Description
Dim ... AS QFONTDIALOG	? Represents the name of the component (element).





Property Settings:

Sno	Property	Description
1	<pre> \$TYPECHECK ON \$INCLUDE &lt;RapidQ2.inc&gt; dim fbox as qfontdialog CREATE Form AS QFORM     Caption = "FONTS":Width = 640:height = 480:Center END CREATE SetWindowLong(Form.Handle, -8, 0) SetWindowLong(Application.Handle, -8, Form.Handle)  Form.ShowModal                     </pre>	<p>Establish the dialog box element.</p>
2	<pre> \$TYPECHECK ON \$INCLUDE &lt;RapidQ2.inc&gt; dim fbox as qfontdialog <b>declare sub callfontdialog</b> CREATE Form AS QFORM     Caption = "FONTS":Width = 640:height = 480:Center     <b>create fontd as qbutton</b>         left=20:top=20:caption="FONT"         onclick=callfontdialog     <b>end create</b> END CREATE SetWindowLong(Form.Handle, -8, 0) SetWindowLong(Application.Handle, -8, Form.Handle)  Form.ShowModal  <b>sub callfontdialog</b>     <b>if fbox.execute then</b>         <b>end if</b> <b>end sub</b>                     </pre>	<p>You need an event component (qbutton, etc.) to call the QFONTDIALOG element.</p> <p>Establish the sub program.</p> <p>Add a button that will call the fontdialog box sub program.</p> <p>Open the font dialog box and wait until the user has made his/her selections and click the OK button.</p>
3	<pre> \$TYPECHECK ON \$INCLUDE &lt;RapidQ2.inc&gt; dim fbox as qfontdialog declare sub callfontdialog <b>declare sub setdefaultfont</b> <b>setdefaultfont</b> CREATE Form AS QFORM     Caption = "FONTS":Width = 640:height = 480:Center     create fontd as qbutton         left=20:top=20:caption="FONT"         onclick=callfontdialog     end create END CREATE SetWindowLong(Form.Handle, -8, 0) SetWindowLong(Application.Handle, -8, Form.Handle)  Form.ShowModal  <b>sub setdefaultfont</b>     fbox.color=255     fbox.name="Monotype Corsiva"     fbox.minfontsize=8     fbox.maxfontsize=72     fbox.size=16     fbox.addstyles (fsbold, fsitalic, fsunderline) <b>end sub</b>                     </pre>	<p>When you open the QFONTDIALOG you will see some listboxes, comboboxes, etc that contains the information of the selected/ desired font. Establish the font setting sub program. Call the default font setting sub program that will pre-program the settings for the font dialogbox.</p> <p>Start the sub program.                  Alter font color as 255 (red)                  Alter font name as MonoType Corsiva.                  Alter minimum font size as 8 pixels (height).                  Alter maximum font size as 72 pixels (height).                  Alter font size as 16.                  Add some styles to the default settings.</p>



Sno	Property	Description
	<pre>sub callfontdialog   if fbox.execute then      end if end sub</pre>	
4	<pre>\$TYPECHECK ON \$INCLUDE &lt;RapidQ2.inc&gt; dim fbox as qfontdialog declare sub callfontdialog declare sub setdefaultfont setdefaultfont CREATE Form AS QFORM   Caption = "FONTS":Width = 640:height = 480:Center   create fontd as qbutton     left=20:top=20:caption="FONT"     onclick=callfontdialog   end create END CREATE SetWindowLong(Form.Handle, -8, 0) SetWindowLong(Application.Handle, -8, Form.Handle)  Form.ShowModal  sub setdefaultfont fbox.color=255 fbox.name="Monotype Corsiva" fbox.minfontsize=8 fbox.maxfontsize=60 fbox.size=16 fbox.addstyles (fsbold, fsitalic,fsunderline) fbox.addoptions(fdapplybutton,FDlimitsize) fbox.addoptions(fdeffects) end sub  sub callfontdialog   if fbox.execute then      end if end sub</pre>	<p>In addition to the default font settings allowed, you may add the following options to the font dialog box pre-programmed settings:</p> <ul style="list-style-type: none"> <li>• <b>FDanSionly</b> – No fonts with weird symbols.</li> <li>• <b>FDTrueTypeOnly</b> – TRUE TYPE Fonts only.</li> <li>• <b>FDeffects</b> – the EFFECTS groupbox enabled or disabled.</li> <li>• <b>FDNoSizeSel</b> – Disable/enable the size selection listbox.</li> <li>• <b>FDLimitSize</b> - Enable/disable limited font size.</li> <li>• <b>FDScalableOnly</b> – Enable/disable font scaling.</li> <li>• <b>FDApplyButton</b> – enable/disable apply option.</li> </ul> <p>Add some options. Remove some options.</p>
5	<pre>\$TYPECHECK ON \$INCLUDE &lt;RapidQ2.inc&gt; dim fbox as qfontdialog dim font as qfont declare sub callfontdialog declare sub setdefaultfont setdefaultfont CREATE Form AS QFORM   Caption = "FONTS":Width = 640:height = 480:Center   create fontd as qbutton     left=20:top=20:caption="FONT"     onclick=callfontdialog   end create   create label1 as qlabel     left=20:top=80:caption="The brown Fox jumps 123"   end create END CREATE  SetWindowLong(Form.Handle, -8, 0) SetWindowLong(Application.Handle, -8, Form.Handle)</pre>	<p>Once the user has clicked the <b>OK</b> button on the <b>fontdialogbox</b>, then font settings must be updated accordingly to the element as specified.</p> <p>Add a label that will be used to illustrate the change in the font as we will assign the font as selected within the Fontdialogbox.</p>



Sno	Property	Description
	<pre> Form.ShowModal  sub setdefaultfont fbox.color=255 fbox.name="Monotype Corsiva" fbox.minfontsize=8 fbox.maxfontsize=60 fbox.size=16 fbox.addstyles (fsbold, fsitalic,fsunderline) fbox.addoptions(fdapplybutton,FDLimitsize) fbox.addoptions(fdeffects) end sub  sub callfontdialog   if fbox.execute then     <b>fbox.setfont(font)</b>     <b>label1.font=font</b>   end if end sub                     </pre>	<p><b>Assign the font dialog</b> box settings as the <b>FONT</b> element. <b>Assign the FONT settings</b> as <b>LABEL1</b> font settings. Notice the <b>APPLY</b> button will only preview the font and not exit the actual font dialog box.</p>

